

**St Mary's Church, Bitton**

# **ANNUAL REPORT 2024**



## **Cover Picture**

The cover picture, by Douglas MacDonald, is a village portrait taken on Sunday 7th May 2023 following a special Service of Thanksgiving following the coronation of Their Majesties King Charles III and Queen Camilla the previous day.

The event also saw a blessing for two trees planted in the churchyard as part of the late Queen's Jubilee Canopy.



# **St Mary's Church Bitton Annual Report 2024**

**Reports submitted to the Annual Church meeting, held  
on 15th April 2024 and reporting on the year 2023.**



St Mary's Church Bitton

## ***Our Mission***

**W**e are a Christian Church in the heart of a village, seeking to support and serve the local community in the surrounding area.

- ◆ We believe that we are all on a journey of faith, and all are welcome here, no matter at what stage the journey.
- ◆ We aim to be outward looking, to be involved in the local community and to support and serve in the community wherever we can.
- ◆ We are a group of ordinary people who seek to follow Jesus Christ; we meet together to worship God and to encourage and support each other to grow in faith.
- ◆ We understand that different people have different reasons for coming to church; we respect these differences and are committed to welcoming but not overwhelming, and being sensitive to people's needs.

# Contents

1	Curate in Charge Report	7
2	Churchwarden's Report	9
3	Worship & Witness	12
4	Treasurer	14
5	PCC Secretary	16
6	Physical Resources	17
7	Fête	19
8	Fundraising & Social	20
9	St Mary's Scouts	22
10	Church Hall	24
11	Churchyard	26
12	Safeguarding	28
13	Attendance	30
14	Future	32
	<b>Accounts</b>	<b>37</b>
	<b>PCC Membership 2023-24</b>	<b>45</b>
	<b>Further Information</b>	<b>46</b>



**Remembrance Sunday 2023**

# **1. Curate's Report January to December 2023**



Reflecting on the year from January to December 2023 shows a wide variety of worship, mission, ministry and opportunities across the benefice, and I expect these will be covered in more detail by individual reports from a range of committees.

Since 2022, there has been an increase in the number of Weddings and Baptisms taking place throughout the year. Indeed on one Sunday in August, there was a Baptism in each church across the benefice. There have also been a number of requests for funeral services to take place in each of the benefice churches and a similar number of requests for burials of ashes. This shows an ever growing connection to the people within the communities in which we serve. We continue to offer our regular patterns of monthly worship, with a mixed ecology of style, from Book of Common Prayer Holy Communion, to informal Family Café Church with bacon butties and fruit on offer.

In particular St Mary's has offered additional experiences for Children and families, at Easter, with an interactive Easter Experience, and in July with a one-day holiday club, held in the Church Hall at the beginning of the Summer Holidays. Additionally, I started attending the local toddler playgroup, once a month in May 2023 and this has been a source of joy and an opportunity to support local families in a practical way.

When Reverend Jeremy Andrew went on extended ministry development leave from September, Reverend Richard Humphrey and I planned a Service of Remembrance for All Souls, on 5<sup>th</sup> November, which was well attended and provided a space for people to remember and pray for their dearly departed loved ones. I would like to offer my thanks to all who gave their support during those three months, especially Simon Harris.

Further opportunities to gather as community have arisen when we started a monthly Coffee Morning, following Celtic Communion on the fourth Thursday of the month. I would like to thank Barbara Merritt, Anna Palmer and Sue Wakefield for their continued support in organising and running this. We now regularly welcome a small number of dog walkers into the church, with their well behaved dogs, for refreshments, as well as those who come to worship and stay on.

I would like to give my thanks for the support and commitment of benefice ministry team, Ken Gibson, David Bailey, Pete Midgley and Reverend Richard Humphrey, and also to those who regularly minister in St Barnabas and St Anne's churches; Leslie Willcox, Jillianne Norman, and John Sibley, without whom we would be very stretched. Additionally, I would like to offer my thanks to Zena, who has been maintaining our Benefice Calendar which shows what's going on across the Benefice, and to all who support each individual service, with their prayers, music, readings, welcoming, sound support and the all important refreshments after the service. I am grateful for all that you do in leading our worship and supporting the collective church in a such a wide range of ways.

May God bless the continued work of the church throughout 2024.

**Reverend Rosemary Radcliffe, Curate in Charge**



# 2.Churchwarden Report



St Marys continues to offer a range of services from a traditional Communion through to more contemporary service aimed at a younger congregation. Church attendance continues to recover from the 2020 low point (due to the law prohibiting public meetings). Average church attendance is 47 with 7.5 under 16's. The monthly Café church held at the back of the nave adjacent to the kitchen area continues to be popular with a range of 40-70 of whom about a quarter are listed as under 16, in reality under 10 years old. Festival Services attracted good numbers with Palm Sunday 64 and Easter Sunday 80. The Remembrance service had 125, whilst the Christmas Carol and Crib service attracted over 200 to each event. Celtic communion is followed by coffee and cake with 7-11 regulars. We hosted 2 marriages, 6 funerals and 4 baptisms.

Our Vicar, Jeremy Andrew is supported by a number of stalwart ordained and lay clergy and wider PCC who devote a great deal of time and energy to the smooth running of the church with activities ranging from service preparation and delivery, fund-raising and treasurer, secretary, infrastructure and maintenance. Without the generosity of these individuals, the church in Bitton would founder. Financially, the church is reasonably well placed with additional fund raising from the September fête and ad hoc grants and donations supplementing the parish giving scheme; further details are available in the Treasurers Report.

Progress has been made on the re-ordering project with sufficient funding identified to detach the pews from the walls, add a re-purposed end, extend the depth of the seat and add lifting castors to make them mobile. Fund raising continues for cleaning of the Nave walls.

After 9 years of service to the benefice, our Vicar, Rev Jeremy Andrew expressed a desire to take a 3-month sabbatical Sep-Nov. The PCC asked the Standing Committee to assess the request which was later granted. This prompted analysis of the workload on the remaining Curate and lay clergy and the lack of administrative support available, as well as a general lack of visibility of procedures and systems to manage the wider benefice. In response, Jeremy produced, a job specification for an admin assistant (AA) and a benefice handbook to collect general information into one place. St Marys muniment room, above the choir vestry was deemed to be a suitable location and this prompted a major clear out to make way for an office. When Jeremy returned from sabbatical in December, the PCC were informed that he had accepted a post in the Bristol Diocese with effect from February 2024.

The post of AA was eventually filled by Ms Sue Godfrey at the same time, who will initially work from home. At the close of the year, the benefice is in interregnum and Rosemary Radcliffe has been appointed as the Curate in Charge.

## **Simon Harris**



**Planting a tree for the Queen's Jubilee Canopy**

# 3. Worship and Witness

The Worship and Witness Committee met three times during 2023.

Several applications were made for funding for a Children and Families worker. Unfortunately these were unsuccessful. This was largely due to the fact that, as a church we are seen to be well off. Progress in this is now on hold.

Changes have been made to the process of how we choose hymns and songs for services. This is now done by the leader of the services, in consultation with the preacher and whoever is providing music for the service.

Jeremy began a process by which the committee was to re-examine its purpose. We were asked to consider two questions: I love St Mary's because..... and I hope St Mary's will. Much discussion ensued and opinions collated. Unfortunately this process was not completed due to Jeremy's sabbatical.

A proposal that we should spend time in prayer before Sunday services was considered. We decided to trial this at 10.00am before the 1<sup>st</sup> Sunday service. This is still ongoing.

We continue to benefit greatly from having live accompaniment to hymns and songs in all our services. We are greatly indebted to Jane Lings and the St Mary's minstrels for leading worship. The pattern remains that Jane plays on first and third Sundays and the Minstrels on second and fourth Sundays.

Family Café Church services have continued to be well attended and thanks are due to the whole team that make this possible.

The committee continues to grapple with the best way of keeping in touch with families and will continue to try to develop the second Sunday service to be accessible. We hope that this will be a place where Family Café Church families can move into as their children grow older.

**Pete Midgely**



**Songs of Praise at The White Hart**

# 4. Treasurer

Notes on General Accounts 2023

## **Income**

Gift Aided and Gift Aid Refund both boosted by Parish Giving Scheme members who opted for inflation alternative, a big 'thank you' to them.

Donations well down as the Future Group now have their own bank account.

Fundraising Events comprise a very good Fête, and also excellent contributions from the Mikado, the Magpies, and especially the Music Evening.

Sundry, as last year, includes £3,790 rebate from the Benefice Fees Account. We have a standing order for £100 per month into this account.

## **Expenditure**

Choir/Organist, each year depends when the invoice arrives.

Cleaning is a regular £80/ month.

Donations which we give each year, this figure looks low, but we allowed too much in the accounts last year. The 'Charitable Giving' we actually paid was £5,710.

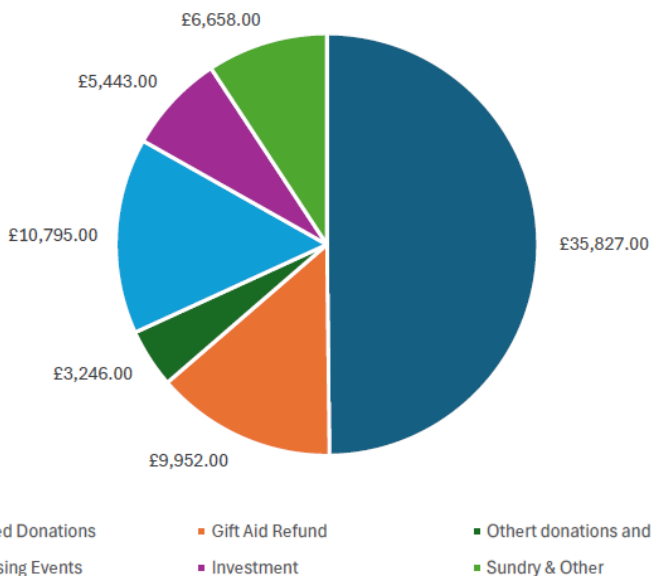
Repairs this year include a new printer, also boiler maintenance, repairs to heating piping as main items.

Sundry includes substantial Gift Aid rebates to Churchyard and Future Group as all rebates have to come into General Account as per HMRC.

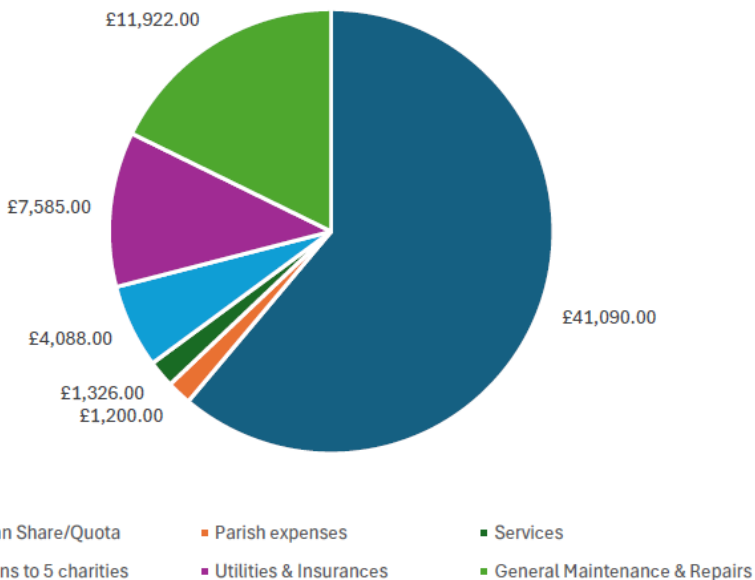
## **John Bennetts**

Derailed accounts for all areas are given at the end of the report.

### General Account -Income 2023



### General Account - Expenditure 2023



## **5. PCC Secretary**



Preparing and distributing the meeting agendas and minutes are my main tasks for the 8 or so PCC meetings during the year.

When I'm not sure of a procedure, and I still feel there's a lot to learn, I'm helped and guided particularly by Ken and Jill Gibson, Jeremy, Rosemary and Simon as well as the rest of the PCC, many thanks to them. I've sourced a copy of 'The Green Book' - The Church Representation Rules, which is going to be a very useful reference for me.

I currently am doing the Electoral Roll Officer duties, so ensuring the names on the roll are current and up to date.

I field occasional enquiries from families or local Funeral Directors regarding burials or Interment of Ashes in the churchyard.

There are occasional letters of thanks to be sent or responses to the Council when the PCC has been consulted on local planning matters.

**Alison Wride**  
**PCC Secretary**



# 6. Physical Resources

The following activities took place during the year:

## January

Inspect & test flood lights on south side of church  
Replace light bulb over toilet door and turn on PIR.

## March

Fit spacer to water standpipe opposite toilet and re-insulate against frost damage.  
Re-attach disconnected guttering on toilet and unblock storm drain.  
Carry out PAT.  
Contractors replaced leaking radiator return pipe under choir vestry floor. And fitted new expansion joints.

## May

Clean rain gully's and waterspouts on tower roof.  
Visual inspection of church roofs.  
Spray paths and church foundations with weed killer.  
All church roofs cleared of weeds.  
Leaking expansion joint in heating pipework fixed under warranty.

## July

Replace blown light bulb in choir vestry.

## **September**

Spray weeds on paths and around church foundations.

## **November**

Boiler service carried out.

## **December**

Investigated possible sources of spares for blower heaters.

UES engineer tightened leaking expansion bellows.

Temporary fix made to toilet water heater, and slow filling of toilet cistern fixed,

Light bulb in boiler room and one outside toilet door replaced.

Bulge in church yard wall repaired

Known costs for 2024

Boiler service £298.80

## **Phil Vowles**





## 7. The Fête

The fête again was blessed with dry weather and again recorded record takings of over £13k with a profit of £11,277. The fête committee will start meeting again in April for next year's fête and as always more help is needed and welcomed.

**Helen Pugsley**

# 8. Fundraising & Social

## **These are a list of events that took place in 2023:**

- 1) Saturday 24<sup>th</sup> June - Bath Gilbert and Sullivan performing The Mikado - this event raised £1113 which was split between the church and G&S.
- 2) Saturday 23<sup>rd</sup> September - afternoon tea to raise funds for MacMillan.
- 3) Saturday 30<sup>th</sup> September - Magpies afternoon tea concert - this event raised which was split between Children's Hospice South West and church.
- 4) Saturday 28<sup>th</sup> October -Autumn Fair
- 5) Saturday 4<sup>th</sup> November - piano recital by Natalie Morton - this event raised £515
- 6) Saturday 25<sup>th</sup> November - Bitton Loves Music - this event raised £436 - this was an event which involved a lot of people from the local community taking part.

## **The following events are planned for 2024:**

- 1) Saturday 23<sup>rd</sup> March -Magpies Choir - The Road to Calvary
- 2) Saturday 13<sup>th</sup> April - Westerly Winds presents Spring Pick and Mix - a medley of musical treats

Other possible events include : a quiz evening, Bath G&S, Bitton Loves Music possibly with a film/musicals theme, a piano concert with Natalie and possibly some of Kiera's and Natalie's pupils and anyone else wishing to take part.

**Jenny Harris**



**The Mikado—Bath G&S Society—June 2023**

# 9. St Mary's Scouts



**Beavers** numbers in 2023 around 15, now we have 12.

Beavers have completed badges including Book Reader, Communicator, Photographer, Explore, Global Issues, Safety, Emergency Aid and Adventure Challenge. These have included a huge range of activities, but most exciting have been visits from the Police, a nurse and a local photographer, as well as trips to Keynsham Fire Station and an archery night at Brocks Outdoor Adventures

**Cubs** numbers are 12 this year with 3 moving up from Beavers to make 15 We have enjoyed lots of other activities like hikes, games nights, and fund raisers.

**Scouts** numbers are 7 with a few Cubs moving up this term we may swell to 9 we have been involved in various themed nights we have made a fire pit from an old Washing Machine drum! gone back to basics with rope skills played a lot of indoor sports due to the terrible Winter Weather

As always, it was really good to be involved in the Church Fete in September with the added responsibility of the football shootout and to have had plenty of Scouting volunteers.

We are so grateful to St Mary's for all of the fundraising opportunities given to us and we enjoy attending the family Services each month.

The same as last year as a group we need a committee and are still looking for a Group Scout Leader and Chairman too.

These roles are not too time consuming and whoever picks up these roles doesn't need to have been involved in Scouting in the past.

**Jon Cox**



**Scouts running the Skittles at the Fete**

# 10. CHURCH HALL



## 1 FABRIC

Early in 2023 an electrical inspection revealed many items for repair or renewal and this cost of £2,200 was born from our dwindling reserves.

In addition one heater required replacement at a cost £3,244 and a complete redecoration at a cost of £4,800 was overdue. At the suggestion of Nicola Bennetts an application to the Community Lottery Fund for £8,055 was made in April and a grant for the full amount was received in July enabling both these projects to be completed.

## 2 ACTIVITIES

These have shown some improvement with income from hirings increasing from £2,365 to £3,613 although parties were down from £570 to £323.

It is encouraging that Flicks and the Gardening Club have returned.

There is still plenty of capacity and enquiries for new regular hirings and for parties are always welcome.

## 3 ACCOUNTS

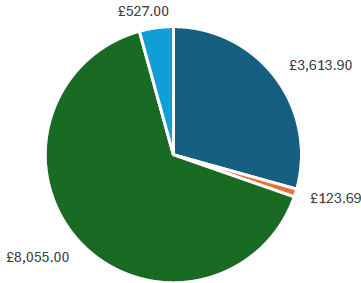
The accounts for 2023 are included with the Church Accounts for the year.

Insurance for the year was £1,490 and Gas and electricity, even after receiving very welcome support of £527 from Bristol Diocese, still cost £1,904.

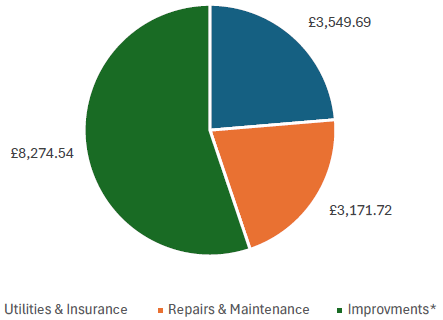
The loss for the year was £2,676 and the closing bank balances are down to £5,045.



**Church Hall Income 2023**



**Church Hall Expenditure 2023**



More detailed information is given in the Accounts section

## 4 FINANCIAL FORECAST FOR 2024

4.1 A loss of £2,700 is forecast for 2024 so the Hall should be self-sufficient for 2024. But it may require support from St Mary's to meet normal operating costs before the end of 2025. This forecast assumes that outside funding meets the cost of the work in 4.2 and 4.3.

4.2 The principal ongoing concern is the floor which has to be patched regularly and quotes for its replacement are being sought with a view to making a further application to the Community Lottery Fund later in the year. The cost will be in the region of £14,000 and if the Grant application is unsuccessful the PCC will need to consider how this can be financed.

4.3 Contact has been made with South Gloucestershire to review the root damage to the paving stones outside the lower door. It is hoped that this will be remedied by South Gloucestershire Street Care.

**Janet Ivens Chairman Jill Gibson Bookings Secretary**  
**Jenny Harris Treasurer**

# 11.

# CHURCHYARD



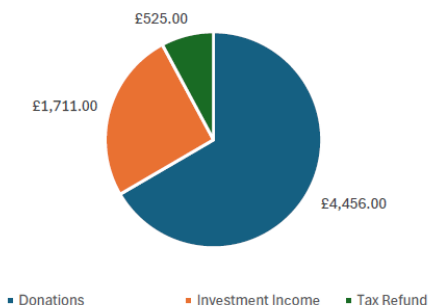
We are pleased to report that our two trees listed as part of the Queens Green Canopy (QGC) are doing well and have passed their first-year anniversary – worthy of note as they were planted in a very dry Spring/ Summer, and we relied heavily on our neighbours and volunteers from church to water them at least twice a week. Thank you to all who helped with this responsibility.

We hope everyone finds our churchyard as beautiful and peaceful as we do. Certainly, we know it is appreciated by our local community as we have a team of volunteers (not our usual congregation) who have spent many Saturday mornings over the past year, clearing and tidying up in certain places where things have become too far overgrown. This is done with consultation, and the result of these sessions has made a vast difference and improvement where tidying up has taken place. A big thank you to all involved.

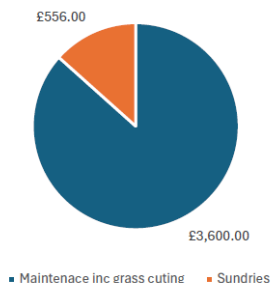
Anne Carrington is still our Eco-church representative, and we have a small area along the north boundary wall, which has been left to 're-wild'. There are, of course, some who like to see the churchyard being left more natural and there are others who like to see the 'well kept' grass.

Avon Valley Landscapes are continuing to cut the grass in the churchyard. Last year we had less cuts than the previous year - 9 cuts (March to mid-November). The price of the cut in 2023 remained at £400. Our thanks to everyone (community or church congregation) who help in any small way to keep our churchyard up together and donate monies throughout the year (regularly or otherwise). These donations really do help us keep afloat.

### Churchyard Income 2023



### Churchyard Expenditure 2023



**More detailed information is given in the Accounts section. Donations shown above do not show the large legacy received during the year.**

We are very grateful to have received a beneficiary of £28,877.71 in 2023. This was a pleasant surprise and we have expressed our grateful thanks to the family via the solicitor concerned. The PCC will need to make decisions regarding this unusual amount, as we consider the future of our churchyard and the responsibility of these funds.

We are grateful to John Bennetts for doing the accounts and obtaining the Gift Aid. The balance in the bank December 2023 was £38,583.93 (clearly inflated with the inheritance mentioned in previous paragraph). However, with current funds and continued donations, we will certainly be able to cut the grass this year!

Our predicted expenditure for 2024 is an approximation as we have not yet confirmed the cost of grass cutting. However, it is usual for us to need an average of ten cuts per year – currently @£400 = £4,000.00 and we will need to pay for tree pruning this year too (no quotes from tree surgeon as yet received).

We still need your continued support, so that we have funds to carry us into next year. Please note that cheques need to be made payable to St Mary's Bitton Churchyard Fund. Thank you.

**Barbara Merritt (Sexton) and Jacqui Harris (Assistant Sexton)**

# 12. Safeguarding

## **Statement of commitment to Safeguarding:**

The parish of St. Mary's, Bitton is committed to safeguarding children, young people, and adults at risk.

**Name of PSO:** Jacqui Harris

## **Policies**

The Safeguarding policy will be reviewed by the PCC at its meeting in May.

## **Activities**

The PCC oversees the following activities for Children/Young People or for Vulnerable Adults;

i.e. Family Café Church, Sunday Lunch outings.

## **Safer Recruitment & DBS**

The PCC is responsible for the safe recruitment of people wanting to work with vulnerable groups through the activities mentioned above. During the year, the PCC has not recruited any additional people to support those groups.

## **DBS Checks**

As part of the safer recruitment process, where eligible, volunteers working with vulnerable groups have been DBS checked at the level appropriate to the role. Because the parish provides activities for vulnerable groups, the PCC members are also eligible for an enhanced DBS Check.

There are 15 PCC members who require a DBS check for their role and 11 of them have a current check (i.e. the check has been completed within the last 3 years).

## **Training**

Safeguarding training at different levels is a requirement for all roles, the current situation in terms of meeting the requirements in the parish is as follows:

Basic Awareness (all church officers and volunteers, bellringers)

Number in Role	5
Number completed training in last 3 years	5
Number with no or expired training	0

Foundation Safeguarding (PCC members, volunteers working with vulnerable groups, Churchwardens, Parish Safeguarding Officer, bellringers supervising children who ring with the team)

Number in Role	12
Number completed training in last 3 years	4
Number with no or expired training	8

Leadership Safeguarding (Churchwardens, Parish Safeguarding Officers, Licenced Lay Ministers, Tower Captains where children ring with the team)

Number in Role	5
Number completed training in last 3 years	4
Number with no or expired training	1

# 13. Attendance at Services

St Mary's provides at least one weekly service on a Sunday. There are four regular types of service ranging from the formal Parish Communion on the first Sunday of the month to a much more informal Family Café Church on the fourth Sunday. The second Sunday usually involves the scouts. There is a simple service of Holy Communion held at 8.00am on the fourth Sunday.

One weekday service of Celtic Communion is held on the fourth Sunday and this is now followed by a tea and coffee morning open to all comers whether they previously attended the communion or not.

The range of services often means that people pick and choose which service to attend. This may explain why average adult attendance has remained generally consistent over the past 12 years while the variation has been felt for what are considered normal Sunday worship (i.e. services with no special element)

Attendance has not yet recovered from the period of the pandemic when the church was closed. Numbers have not yet fully recovered.

470 attendees were recorded for Christmas services in 2023, and there were a total of 80 attendees on Easter Sunday.

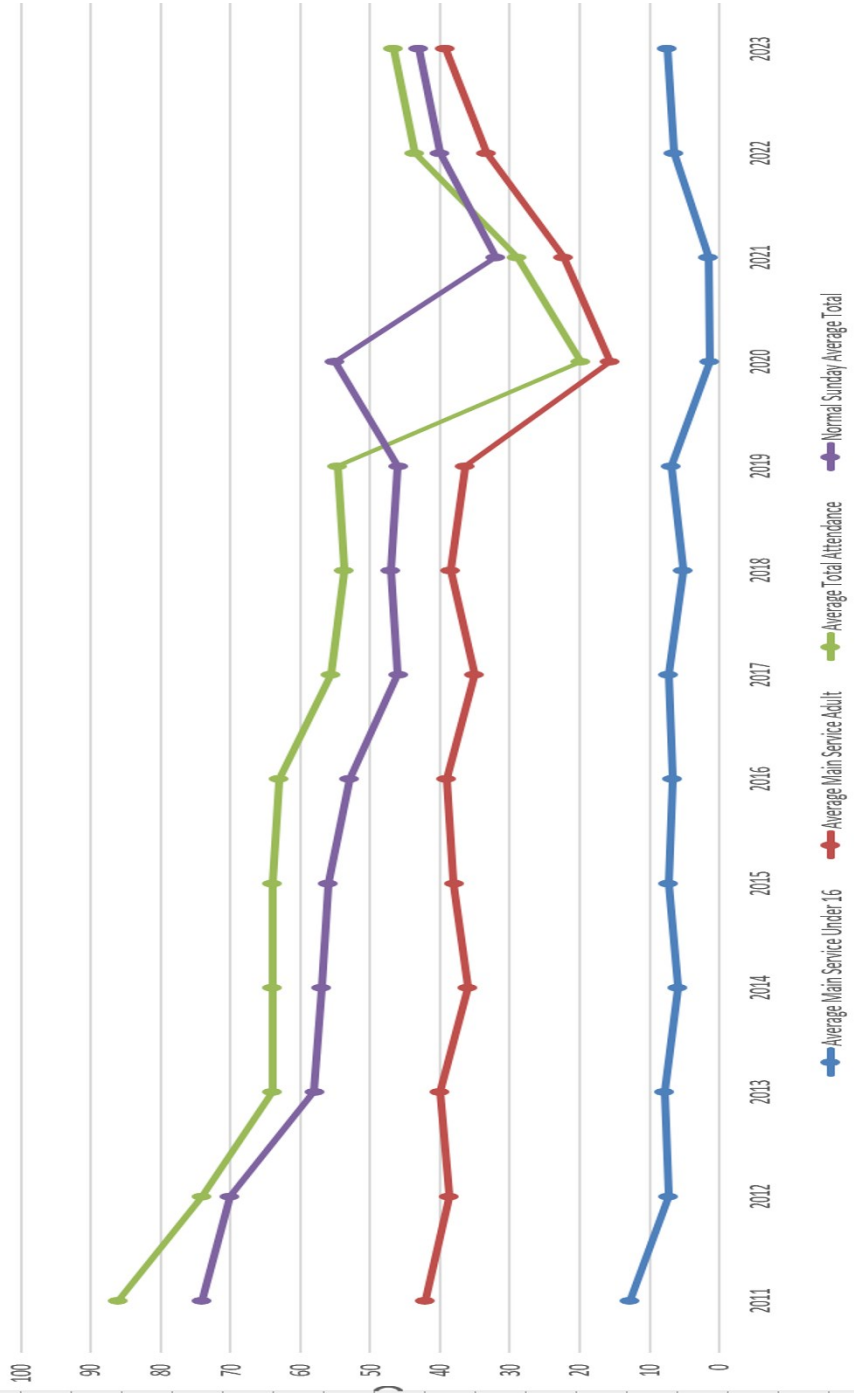
125 people attended on Remembrance Sunday.

Occasional offices in 2023 were as follows:

Baptism 4      Weddings 1      Blessings 0      Funeral 7

Funerals conducted at crematoria are recorded against the Benefice data.

# Attendance 2011-2023



# 14. Future Group

The purpose of the Future Group is to lead development of the church to meet its four strategic objectives:

## **Worship (Mission)**

Our ambition is to make St Mary's an inspiring place for worship and pilgrimage, attracting new people and being open to change.

## **Community (Hospitality)**

This is about the way in which the church is available to the local community, the hospitality that is provided and the welcome that all receive.

## **Heritage**

The intention is to provide a great experience in which the visitor can understand the rich history of the church building and that the history of the church is understood and made accessible to all.

## **Future (Renewal)**

The key element of the strategy is to reorder the church to provide a more flexible space and to support the three preceding strategies.

## **Worship**

The Future Group has not progressed any aspects in respect of worship during 2023. This objective has been taken forward by the Worship and Witness Committee.





**Members of the congregation trying out the new prototype mobile pew—May 2023**

## Community

With a return to normal operating following the pandemic, the church has begun increasing the number of social events taking place in the church and its links with the community.

Among the very successful events was an evening with the Bath Gilbert and Sullivan Society performing music from *The Mikado*, an evening focusing on local talent and a Tea and Coffee Afternoon in support of MacMillan Cancer Charity.

We are very grateful to the St Mary's Music Group and to other local performers who contribute so willingly to such events.

An Autumn Fayre was held for the second year on the last Saturday in October which may become a regular event in Bitton's calendar.

The church was open daily throughout British Summertime and a counter has been installed to record the number of entries and exits made each day.

A successful Drop In Day was held in June to allow the local community to view our new prototype mobile pew and additional money for their completion was also raised.

A newsletter, specifically for the Development Programme has been launched and we are now building a list of supporters to demonstrate the degree of community engagement in the overall project.

## **Heritage**

A second set of audio descriptions were created and placed in the church. These enable visitors to hear a short description of an item of interest in the church and its context. Information about the history of St Mary's Church has been placed on our website as has an article about the composer Robert Pearsall.

We are also grateful to the Bitton History Group and Bridget Hetzel who have been working on the completion of a churchyard project to enable all readable graves and burial records to be accessed on line. It is intended to bring this piece of work to a conclusion in 2024..

Conservators were invited to clean a small area of the north wall to identify the extent and method of cleaning and conservation. A number of test patches were tried and revealed not only the large amount of dirt and soot on the walls, but evidence too of medieval wall painting that was removed with the plaster in the 1860s.

## **Renewal**

Progress on the planned physical changes to the church (which remain the main focus of fundraising and activities) proceed at a remarkably slow pace. However, by the end of 2023, sufficient monies were judged to have been raised for tenders to be sought for work on the pews and Newmans of Bath was subsequently selected on the basis of price and quality to undertake the carpentry work on the pews, including restoration. The fitting of wheels and other structural work will be undertaken by Martin Hanney of Bitton. It is planned that work will take place on the pews starting in August 2024 and completed by the end of the heating system of October.

Fundraising was launched for work on cleaning and conservation of the walls. A target of £40,000 was set and donors are invited to donate in blocks of £50 to clean and conserve a section of the walls.

The major part of the work in this phase of the project is the replacement of the floor and the heating system but, as yet, no scheme has been finalised. In conjunction with the church architect, we are examining several options including the installation of electric underfloor heating.

Short term changes to support the use of the church are also being explored and the church architect has been commissioned to make designs for an additional lavatory.

## **Fundraising and giving**

The majority of the work in raising funds has been led by Nicola Bennetts who continues to approach trust and charities, seeking their engagement and raising funds from the local community.



**Autumn Fayre 2023**

Those wishing to donate have the opportunity to do so in the church, using the donation station or online. Donations can also be made by cash or by cheque.

During 2023 we were grateful for a substantial donation given anonymously as well as a number of other individual gifts and donations of all sizes. A list of those who have donated money to the programme is given below.

As this has largely been a year of planning and preparation, income has fortunately exceeded expenditure, the latter, largely spent on professional fees. Expenditure is planned at a much higher level during the forthcoming year.

## **Jim Heavens**

### **MAJOR DONORS**

We are grateful to the following charities and trusts who have donated to the project:

Renishaw	Julia & Hans Rausing Trust
New Court Trust	Asda Foundation
Langtree Trust	Glo'stershire Historic Churches
Heritage Lottery	Wessex Water
Temple Ecclesiastical	Benefact Trust
Bitton Parish Council	Leonard Laity Stoate Trust
Bristol Archdeaconry Trust	
Ken Biggs Trust	

We are also very grateful to many residents who have already donated towards the project. Thank you.

# Accounts

**St Mary's Bitton General Account**  
**Year ending 31<sup>st</sup> December 2023**

**Income and Expenditure Account**

	2023	2022
<b><u>Income</u></b>	<b>£s</b>	<b>£s</b>
Gift Aided	35,827	33,510
Gift Aid Refund	9,952	8,935
Collections	<u>1,693</u>	<u>1,485</u>
	47,472	43,930
Church Hall Insurance contribution	1,490	1,398
Deposit Account and Investment Income	5,443	5,329
Donations	1,553	11,776
Funeral, Weddings	152	261
Fundraising Events	10,795	10,398
Sundry	<u>5,016</u>	<u>5,459</u>
	24,449	34,621
Total	71,921	78,551
<b><u>Expenditure</u></b>		
Diocesan Share/Quota	41,090	40,090
Parish expenses	1,200	1,200
<b><u>Church expenses</u></b>		
Insurance	5,210	4,857
Heat/light/Water	2,375	2,874
Upkeep of Services	600	977
Choir/Organist	675	0
Cleaning	1,040	760
Wedding and other fees	00	00
Sunday School	51	34
Donations	4,088	6,422
Repairs	8,795	14,482
Pews	43	11,353
Sundry	<u>2,044</u>	<u>2,377</u>
Total	67,211	85,426
<b><u>Surplus/(Deficit)</u></b>	4,710	(6,875)

**St Mary's Bitton General Account****As at 31<sup>st</sup> December 2023****Balance Sheet**

<b><u>Current Assets</u></b>		<b>2023</b>	<b>2022</b>
		<b>£s</b>	<b>£s</b>
Bank-Current Account		54,628	50,773
Bank CBF		<u>4,594</u>	<u>4,452</u>
	(a)	<u>59,222</u>	<u>55,225</u>
<b><u>Current Liabilities</u></b>			
Creditors	(b)	<u>(5,316)</u>	<u>(6,029)</u>
<b><u>Net Current Assets</u></b>	(a-b)=(c)	53,906	49,196
<b>Investments</b>	8,578 units @ £22.6053	193,908	177,100
	2,899.51 units @ £5.8089	<u>16,843</u>	<u>14,277</u>
	(d)	210,751	191,377
<b><u>Total Assets</u></b>	(c+d)	<b><u>264,657</u></b>	<b><u>240,573</u></b>
<b><u>Represented By</u></b>			
<b>Accumulated Fund</b>	Balance brought forward	56,197	63,072
	Surplus/(Deficit)	<u>4,710</u>	<u>(6,875)</u>
	(e)	60,907	56,197
<b>Capital Fund</b>	Balance brought forward,	184,376	210,029
	Inc/(Dec) Value of Investments	<u>19,374</u>	<u>(25,653)</u>
	(f)	203,750	184,376
<b><u>Total Fund</u></b>	(e+f)	<b><u>264,657</u></b>	<b><u>240,573</u></b>

ChurchaccDec23  
Jwfb

**St Mary Bitton**

**Restoration and Heating Fund**

**Accounts for the Year Ending 31<sup>st</sup> December 2023**

	2023	2022
	£	£
<b><u>Income</u></b>		
Central Board of Finance Dividends.	1,546	1,536
Donations	50	50
Central Board of Finance Interest.	<u>399</u>	<u>148</u>
	1,995	1,734
<b><u>Expenditure</u></b>		
Bank charge	0	0
Transfer to General Account (boiler burner)	0	0
<b>Increase/(Decrease) in value of Investments</b>	5,595	(7,356)
<b>Surplus/(Deficit) for year</b>	7,590	(5,622)
<b>Balance Brought Forward</b>	65,047	70,669
<b>Balance Carried Forward</b>	<b>72,637</b>	<b>65,047</b>

---

**BALANCE SHEET**

CBF Deposit Account.	13,846	11,901
Bank Current Account.	<u>952</u>	<u>902</u>
	14,798	12,803

**INVESTMENTS**

<b>Central Board of Finance Investment Fund</b>		
726 Units at Valuation 2260.53p (Previous year 2064.59p)	16,411	14,989
1,234.82 Units at Valuation 2260.53p (Previous year 2064.59p)	27,913	25,494
4466.15 Units at Valuation 302.6p (Previous year 263.35p)	<u>13,515</u>	<u>11,761</u>
	57,839	52,244
	<u><b>72,637</b></u>	<u><b>65,047</b></u>

ChurchaccDec23  
jwfb.



## Churchyard Fund

### Year Ending 31<sup>st</sup> December 2023

	2023	2022
	£	£
<b><u>Income</u></b>		
Donations	33,333	1,960
Investment Income	1,711	1,700
Tax Refund	525	530
Parish Council	0	0
Fees/Monuments	0	0
Sundries	<u>0</u>	<u>0</u>
<b><u>Total</u></b>	<b>35,569</b>	<b>4,190</b>
<b><u>Expenses</u></b>		
Labour	3,600	4,000
Fees	0	0
Sundries	<u>556</u>	<u>0</u>
<b><u>Total</u></b>	<b>4,156</b>	<b>4,000</b>
Surplus/(Deficit) for year	31,413	190
Balance Brought Forward	<u>14,774</u>	<u>14,586</u>
Balance Carried Forward	46,187	14,774
<b><u>Capital Fund</u></b>		
Balance Brought Forward	47,702	55,109
Unrealised Income	<u>5,236</u>	<u>(7,407)</u>
	52,938	47,702
<b><u>Total Funds</u></b>	<b>99,125</b>	<b>62,478</b>
<b><u>Current Assets</u></b>		
Current Account	38,583	7,176
CBF Deposit Account	<u>132</u>	<u>128</u>
Total	38,715	7,304
Investments		
2672.38 CBF Investment Fund Units @ £22.6053	<u>60,410</u>	<u>55,174</u>
<b><u>Total Assets</u></b>	<b>99,125</b>	<b>62,478</b>

## St Mary's Church Hall Bitton Accounts for the year 2023

	2023		2022	
<b>Opening balance</b>				
National Westminster Bank	2124.13		3909.15	
CCLA	£ 5596.89	£ 7721.02	£ 5524.23	9433.38
<b>Income</b>				
Table tennis	£ 950.00		£ 825.00	
Beavers	£ 279.00		£ 288.00	
Playgroup	£ 660.15		£ 131.25	
Pilates/Yoga	£ 820.00		£ 140.00	
W I	£ 312.50		£ 318.75	
Almshouses	£ 93.75		£ 12.50	
BVRA	£ 75.00		£ 80.00	
Gardening	£ 50.00			
20 is Plenty	£ 50.00			
Parties	£ 323.50		£ 570.00	
CCLA Interest	£ 123.69		£ 72.66	£ 2,438.16
Community Lottery Award	£ 8,055.00			
Diocesan Heating Grant	£ 527.00	£ 12,319.59		

**Expenditure**

Electricity and gas	£ 1,903.92		£ 1,239.57	
Water	£ 155.77		£ 147.45	
Insurance	£ 1,490.00		£ 1,398.00	
Fire equipment check	£ 160.86		£ 58.20	
Repairs	£ 2,206.80		£ 876.00	
Cleaning	£ 524.06		£ 360.00	
Electric heaters service	£ 280.00		£ 71.30	£ 4,150.52
Replacement heater	£ 3,244.54			
Redecoration	£ 4,800.00			
Book case	£ 230.00	£ 14,995.95		
<b>Loss for the year</b>			£ 2,676.36	£ 1,712.36

**Closing balance**

National Westminster Bank	£ 3,824.08		£ 2,124.13	
CCLA	£ 1,220.58	£ 5,044.66	£ 5,596.89	£ 7,721.02

**St Mary's Development Programme Account**  
**Year ending 31<sup>st</sup> December 2023**

Income

Bank balance as at December 2022	51828
Charitable Trusts	12,510
Events and Spin-offs	2,298
Private donations	105,275
Other sources (VAT refund, Gift Aid)	794
Interest	1,382
	<b>174087</b>

Expenditure

Architects' Fees	7350
Other professional fees	6553
Events Expenses	646
Equipment	258
Bank charges and website	697
	<b>15504</b>

Income less Expenditure

Income	174087
Expenditure	<u>15504</u>
	<b>158583</b>

Development Programme Bank Accounts as at 31<sup>st</sup> December 2023

Development Programme Current Account as at 31/12/23	27,088
Development Programme Instant Access Deposit Account 31/12/22	30,234
Development Programme 32 day Deposit Account 31/12/22	<u>101261</u>
	<b>158583</b>

*I hereby certify the above and statements as a true and accurate record.*

*R. G. Hines*

*Accountant.*

*28/3/2024*



St Mary's Church Bitton

# PAROCHIAL CHURCH COUNCIL 2023-2024

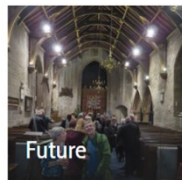
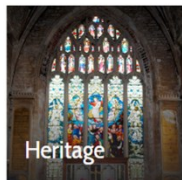
CLERGY	CHURCH WARDENS	LAY MINISTERS
<b>Vicar:</b> Rev Jeremy Andrew <b>Curate:</b> Rev Rosemary Radcliffe	Simon Harris Vacancy	David Bailey Ken Gibson
<b>Ordained Minister:</b> Rev Richard Humphrey	<b>Deputy Churchwarden:</b> Barbara Merritt	

TREASURER	SECRETARY	DEANERY SYNOD REPRESENTATIVES
John Bennetts	Alison Wride	Jacqui Harris Jim Heavens

ELECTED MEMBERS		
Phil Vowles (to 2024)	Anne Carrington (to 2025)	Pete Midgley (to 2026)
Jill Gibson (to 2024)	Vacancy	Helen Pugsley (to 2026)
Douglas MacDonald (to 2024)	Vacancy	Stephanie Bailey (to 2026)
There are 9 elected posts. 3 are open to election each year and members serve for a period of 3 years.		

# FURTHER INFORMATION

More information about St Mary's Church Bitton can be found on our website:



[www.stmarysbitton.org](http://www.stmarysbitton.org)

You will be most welcome to visit the church. It is open every day during British Summertime between the hours of 10.00am and 5pm (often longer).

Sunday Services take place at 10.30am on the first, second and third Sundays of each month. On the fourth Sunday there is a service of Holy Communion at 8.00am and Family Café Church at 9.30am. If there is a fifth Sunday in the month a joint benefice service is held at one of the three churches in the benefice: at St Marys in Bitton, St Barnabas in Warmley or St Ann's in Syston.

There is a midweek service on the fourth Thursday at 10.00am which uses a Celtic Communion format. This is followed at 10.30am by a Village Tea and Coffee Morning, which is open to all regardless of whether they have attended the service or not.

Further details can be found on our website or in the parish magazine **Focal Point**.



[www.stmarysbitton.org.uk](http://www.stmarysbitton.org.uk)



THE CHURCH  
OF ENGLAND



St Mary's Church Bitton

**St Mary's Church is part of the Benefice of St Barnabas, Warmley; St Ann, Syston; and St Mary, Bitton: in the Diocese of Bristol.**