



£1

Focal Point

December 2021

Bishop of Bristol visits St Mary's



Our Future Vision

Our future vision is for St Mary's to be:

- ◆ a thriving hub for the community
- ◆ an inspiring focus of heritage and pilgrimage
- ◆ a centre where everyone can gather for a wide variety of activities
- ◆ in a building that is welcoming, accessible, and well resourced



We have already completed the first phase of work by removing the rear pews and making an open space at the rear of the church. We have developed some clear plans with our architect and undertaken an archaeological investigation on the south side of the church where we intend to erect a building in the future.

We have also had time to take the first steps in upgrading our sound system and to install Wi-Fi.

Remaining work is scheduled in two phases: the interior and the other focused on exterior. The detailed plans are given on the other two of this display.

Phase One is intended to be transformative and make the experience of coming to St Mary's altogether brighter and more frequent, for all.

Phase Two is completed.
We will create a church that feels brighter and clearer. It should be able to accommodate a range of activities and events, with the opportunity to have a seat or stand, information about the church and its past, and a meeting space.

Phase Three is completed.
We will be able to give better wheelchair access and the completely mobile and more comfortable. There will be a new meeting space.

Phase Four is completed.
We will be able to give better wheelchair access and the completely mobile and more comfortable. There will be a new meeting space.

Phase Five is completed.
We will be able to give better wheelchair access and the completely mobile and more comfortable. There will be a new meeting space.

Phase Six is completed.
We will be able to give better wheelchair access and the completely mobile and more comfortable. There will be a new meeting space.

Phase Seven is completed.
We will be able to give better wheelchair access and the completely mobile and more comfortable. There will be a new meeting space.

Phase Eight is completed.
We will be able to give better wheelchair access and the completely mobile and more comfortable. There will be a new meeting space.

Phase Nine is completed.
We will be able to give better wheelchair access and the completely mobile and more comfortable. There will be a new meeting space.



Advent & Christmas Services



KNOWLEDGE. INTEGRITY. RESULTS.

When it comes to moving home, you need professionals who are trained and trustworthy, with in-depth local knowledge and the technology and connections to market your property.

As exclusive Members of The Guild of Property Professionals we can meet your needs and clearly stand apart from the competition in both sales and lettings.

Contact us for a free confidential marketing appraisal

DAVIES & WAY

CHARTERED SURVEYORS • ESTATE AGENTS

SOLD

SUBJECT TO CONTRACT

0117 9863681

daviesandway.com

Keynsham Office

1 High Street, Keynsham

Bristol, BS31 1DP

0117 9863681

keynsham@daviesandway.com

Saltford Office

489 Bath Road, Saltford

Bristol, BS31 3BA

01225 400400

saltford@daviesandway.com

www.daviesandway.com



Your property in Park Lane

Showcase your property to the
lucrative London market



By instructing your local Fine & Country agent, your property will not only be marketed locally and regionally, but nationally and even internationally via Fine & Country's Head Office and Showroom located at one of the most prestigious addresses in the world – 121 Park Lane, Mayfair, London W1.

With over 40ft of window display on Park Lane, we not only reach a lucrative buyers' market other agents cannot, we also market all Fine & Country properties 24/7 through touchscreen technology, enabling customers to browse the details of Fine & Country properties from around the globe, even when the office is closed.

For more information on promoting your property
in our Park Lane office or for a free valuation, please contact;
Fine & Country, 36 Gay Street, Bath, Somerset BA1 2NT
01225 320032 | bath@fineandcountry.com



Fonthill Garden Centre

The family owned
Garden Centre
since 1967

Fonthill
Garden centre



Planting • *Outdoor living* • *Café*

Bath Road, Bitton, Bristol BS30 6HX

0117 932 3110 www.fonthill-lakeside.com

Focal Point

Bitton Churches' Magazine

December 2021

A monthly church newsletter serving
Bitton, Swineford, Willsbridge,
Upton Cheyney & Beach

Published by St Mary's Church, Bitton and
the United Reformed Church, Upton
Cheyney.

Printed by The Mitre Press, Unit 2 Fantasie
Buildings, Waters Road, BS15 8BE

To advertise in Focal Point
please contact Roger Tilley
rogerjohntilley@gmail.com

FOR ALL FOCAL POINT INQUIRIES

Editor: Jim Heavens

Phone: 07720 248534

Email:

jimheavens@outlook.com

Website:

www.stmarysbitton.org.uk

*Deadline for the January
magazine is:*

Tuesday 16 December 2021

In this month's Focal Point:

- Page 18 **Vicar's Letter**
*The hands of Grief and
Gratitude*
- Page 20 **Bishop Viv visits St Mary's**
*Bishop of Bristol celebrates
communion in Bitton*
- Page 22 Bitton Remembers—
Remembrance Sunday
- Page 24 **Lockdown Lightbulb: The
Plant Barn** - Bitton's newest
shop
- Page 28 Church Mice support
Development Plans
- Page 30 Welcome to Sharon Glead
- Page 32 Christian Aid Christmas
Appeal
- Page 34 Fizpop Event explodes in
Church
- Page 36 *History Group*— Hannah
More—woman of influence
- Page 37 It's so spooky—Halloween
in Bitton
- Page 40 **WI News**
- Page 42 **WI Recipe** - Leek and Stilton
Soup
- Page 44 **This month's Quiz**
(answers to last month's quiz
on the following page)
- Page 47 Last Word

**Churches' news and
information about acts of
worship pages 10 to 14**

Cover photo by Sarah Heavens

Focal Point Subscriptions Due

With the end of the year, Focal point subscriptions will be due at the end of December. For another year there is no change in the annual subscription rate of £10 , a saving of £2 on the cover price for 12 issues. Collections will be made by your distributor towards the end of the month. Regrettably, at present we are only able to take cash or cheques. Focal point aims to provide a mixture of church and community news and welcomes contributions from all local residents whether church or chapel goers or not.

May we wish you the compliments of the season and look forward to providing you with a magazine each month in 2022.



SUSTAINABLE FITNESS

A WARM WELCOME FROM
SUSTAINABLE FITNESS.

WE ARE A SMALL, INDEPENDENT HEALTH AND FITNESS COLLABORATION LOCATED IN UPTON CHEYNEY - CLOSE TO BATH, KEYNSHAM AND EAST BRISTOL.

WE WORK WITH CLIENTS OF ALL AGES AND ABILITIES INCLUDING THOSE WITH PRE-EXISTING HEALTH CONDITIONS OR CONCERNS.

WE OFFER:

- SPORTS & REMEDIAL MASSAGE
- SOFT TISSUE THERAPY
- PHYSIOTHERAPY
- PERSONAL TRAINING
- EXERCISE PROGRAMMES
- EXERCISE CLASSES

GET IN CONTACT TO FIND OUT HOW WE CAN BEST HELP YOU:

JO@SUSFIT.CO.UK
07845 557 862

WWW.SUSFIT.CO.UK  [@SUSFITUK](https://www.instagram.com/susfituk)



S M Wilkins Electrical Services

- ◆ **FREE QUOTES**
- ◆ **COMPETITIVE RATES**
- ◆ **FULLY INSURED**
- ◆ **SIX-YEAR WARRANTY**
- ◆ **OVER 20 YEARS' EXPERIENCE**

- Testing & inspection
- Landlord certs (EICR)
- Fault finding/repairs
- Fuse board replacement
- Extra sockets/lights
- Cooker/shower installation
- Smoke alarms
- Security/outdoor lighting



Mobile: 0771 218 9118



Email: smwilkins.electricalservices@gmail.com

A small and friendly practice providing
the very best care for animals and their owners

OLDLAND HOUSE Veterinary Surgery

Stephen Pullan, BVSc, MRCVS
103 High Street, Oldland Common, Bristol
Monday-Friday 8am-7.30pm: Saturday 10-12am
Tel: 0117 932 3100



E. C. Alderwick & Son Ltd
Funeral Directors

Serving Bristol since 1945

Kingswood - 11 Regent Street, Kingswood, Bristol, BS15 8JX

Tel: 0117 967 3609

Hanham - 71 High Street, Hanham, Bristol, BS15 3DG

Tel: 0117 935 3746

HRD Hardware

Jim & Janette

look forward to welcoming you

Plumbing & electrical supplies
pet foods - paints - tools - gifts
fabric dyes - paraffin

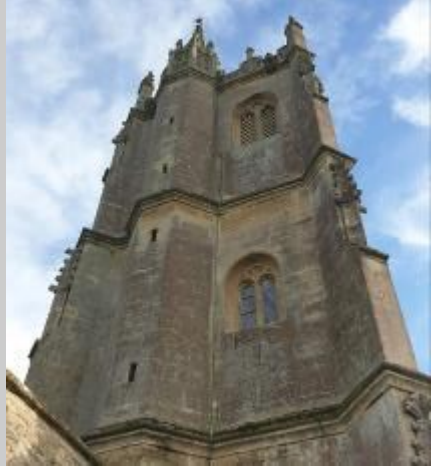
20 Westcourt Drive, Oldland Common

- Churches & Services -



**ST MARY'S
CHURCH,
BITTON**

www.stmarysbitton.org.uk



Vicar:

Rev Jeremy Andrew
The Vicarage, Warmley
0117 967 2724

Ordained minister:

Rev Richard Humphrey
Splinters, Kenilworth Drive
Willsbridge **0117 949 0502**

Lay ministers:

Ken Gibson, 8 Church Road,
Bitton
0117 932 2122

Churchwardens:

Pete Midgley
30 Kenilworth Drive, Willsbridge
0117 932 6898

David Bailey, Westover,
Bath Road, Bitton
0117 932 8949

Jacqui Harris
29 St Anne's Drive, Wick
0117 937 4706

Services for DECEMBER 2021

Services at St Mary's

You will be very welcome at all services at St Mary's .

Sunday, 5 December

Second Sunday in Advent

10.30am Parish Communion

Sunday, 12 December

Third Sunday in Advent

10.30am Family Café Church and Family Special combine for a Christmas Gift Service followed by a Cake Sale in aid of Scout funds (see page 16 for further details)

Sunday, 19 December

Fourth Sunday in Advent

10.30am Christmas Reflections

6.30pm Candlelit Carol Service

The Carol Service is expected to be well attended. If you feel concerned about coming to a full church, you may wish to join online as the service will also be live streamed.

Details at www.stmarysbitton.org.uk

Friday 24 December

Christmas Eve

4.00pm **Crib Service (see page 14 for details)**

11.00pm Midnight Communion

Saturday 25 December

Christmas Day

8.00am Holy Communion

10.30am Christmas Praise

Sunday, 26 December

St Stephen—*Boxing Day*

No service at St Mary's

Benefice Communion at 10.30am at St Ann's Syston

From the Register

16th November Funeral

Doreen Jeferies RIP





UPTON CHEYNEY United Reformed Church

www.e-voice.org.uk/uptoncheyneychapel



Services for December 2021

Sunday services are at 3pm

Sunday 5th Service led by Steve Britten

Sunday 12th. Service led by Margaret White

Sunday 19th. Carol Service led by Steve Britten

No coffee afternoon in December

St Mary's Matters

December is usually an exciting month as we move into the season of Advent and begin to look forward to the celebrations surrounding the birth of Jesus, taking some time for rest and spending time with family. Last year, of course, was an exception. We were in the midst of major restrictions to our church services and families were to be allowed to mix only on Christmas day itself. Thankfully this year sees a very different picture and as I write we are planning all the usual services, full details of which you will find elsewhere in the magazine. There is no indication that any national restrictions will be imposed, so you are warmly invited join in whether it be for carols around the village on Tuesday 21st, the crib service on Christmas eve or any of our Sunday services during December.



Pete Midgley

That said, we are aware that some of our services can be very busy and the crib service and carol service are notable for this. We are not planning any formal restrictions on numbers in these services but if you have concerns about large gatherings then please be aware of this. We will be livestreaming the carol service on the evening of 19th December at 6.30 on the St Mary's Facebook page (@stmarysbitton), so please take advantage of this if you would like to.

On 31st October it was a pleasure to welcome Bishop Viv to the joint benefice communion service at St Mary's. It seems odd to be putting this in the December magazine but the date meant it was too late for the November edition and I don't want the event to go unrecorded. It was great to take the opportunity to show Viv the church and the plans for redevelopment. She gave a very challenging talk referencing the COP 26 conference and climate change and it was encouraging to have her with us.



CHRISTMAS EVE CRIB SERVICE AT 4.00pm

Younger worshippers are invited to dress up as angels, shepherds or wise men – or even sheep or camels – to take part in the Christmas story and carols.



Benefice Prayer Meetings

Tuesday 7 December at 7.30 pm: This will be a Zoom meeting. The link will be available on the St Mary's website www.stmarysbitton.org.uk

Saturday 18 December at 9.00 am :Prayer breakfast in Bitton Church Hall.



Absolutely Feet

Caring for your feet, in your own home.

Professional treatment of corns, callus, fungal infections, painful or thickened nails, diabetic foot care, nail trimming etc.

Joanne Nash MCFHP MAFHP
Insured & Registered Foot Health Professional

07881 530600
absolutelyfeet@hotmail.com



CAROL SINGING IN BITTON

TUESDAY 21 DECEMBER

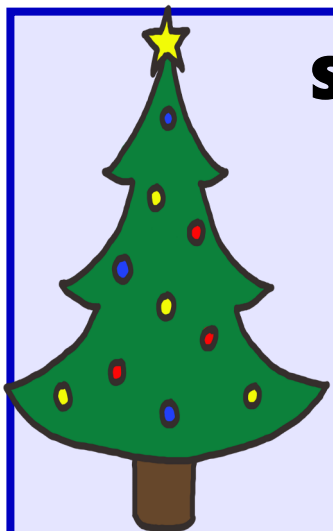
**6.30 for 6.45 at the Christmas
Tree**

Meet outside the White Hart for Carols around the village to bring a touch of Christmas to the house bound. Carol sheets provided but wrap up warm and bring a torch.

7.30 at the White Hart

James and Jemma invite the whole community to sing carols in the White Hart. Mulled wine and mince pies will be available.

Everyone is welcome



St Mary's Christmas Gift Service

**Sunday 12 December
at 10.30am**

**Please bring an unwrapped
gift for needy families in the
Bristol area.**

***For children - unwrapped new or nearly
new toys, books or toiletries.***



***For adults – gloves, socks,
scarves, hats and toiletries or seasonal
food such as mince pies, biscuits and
chocolates.***

***The service will be followed by a
cake sale for Scout Funds***



Scouts 

Matt Bressington Plastering Services Friendly & Reliable



All types of Plastering Rendering Pebble Dashing

Dry Lining Coving

Fully Insured Over 25 years experience

Competitive Rates Free Quotations

Tel: 0117 9830108 Mobile: 07905 474 966

Email: matt_bressy@yahoo.co.uk



James Electrical Contractors

Independent electrician with more than
15 years' experience in domestic electrical work.

Offering a 24/7 service to cover you
for every eventuality.

Call James on 07950668812
Jec.electrical86@gmail.com



Vicar's Message

The Hands of Grief and Gratitude



Dear Friends,

Every year at this time we have conversations about “the big day”. What makes Christmas day, Christmas day? The conversation is wide ranging from food to decorations to presents to drink to television programmes and to church. Last Christmas was an entirely different conversation focussed on how to get together and for how long and how we would stay safe. The questions moved from what and how much to how and when.

I suppose I hoped that in times of crisis we would turn more to the church and to our faith for succour, but the tsunami of rules and regulations and the very restricted nature of church attendance found us intent on how we were going to manage and keep people safe. Reflecting on that experience and the experience of these covid times I am drawn to the theme that Lynne Baab¹ draws out in her book “*Two Hands*”. Each hand is a metaphor for either grief or gratitude and in her book, she wrestles with the idea that we can hold both grief and gratitude at the same time. Baab noticed a pattern in the psalms of the lament of the bible that moved from sadness to anger to grief and then to thankfulness and praise. A good example of this is Psalm 30 and verse 5 which says, “Weeping may endure for a night, but joy comes in the morning.”

1. Baab, L. 2021. *Two Hands: grief and gratitude in the Christian life*

Focal Point, December 2021

Baab's contention is that as grief is held in one hand and gratitude in the other, often one hand is prominent at a given moment and then the other and there is a clear moment when sadness turns to thankfulness. She also noticed that sometimes both of these things are held equally and at the same time; at moments when we count our blessings, we can also be mindful of others who are less fortunate.

This last year has been full of these moments as we have learned to live differently because of Covid. We have learned what is most important to us and what we miss when it is taken away from us. We have shown our gratitude to the NHS whilst recognising the huge pressure that it is under and seeing its brokenness. We have experienced the grief of isolation and the lack of physical presence of friends and family and we have been grateful for the technology that has helped us bridge that gap.

The positions of grief and gratitude are juxtaposed but this Christmas I have realised that the very heart of the message of the bible during this season is both grief and gratitude and we hold these two equally. We grieve that the world is so broken that God had to intervene in Jesus and we are so grateful that Jesus did just that. The word became flesh and "pitched his tent" in the midst of us. We describe this combination of sadness and joy every time we kneel at the communion rail and receive the body and blood of Christ.

As we reflect on the year past there is much to lament over but also much to be thankful for. May the joy of the Christ child be yours this Christmas even if you are holding grief in the other hand.

May I wish you a very happy and peaceful Christmas.

Jeremy

Bishop Viv visits St Mary's



Focal Point, December 2021

Those attending Parish Communion on 31 October were delighted that the celebrant was the Bishop of Bristol. This was Bishop Viv's first visit to the church. Her sermon raised issues of the environment and those of COP 26 meeting in Glasgow. Bishop Viv spent time after the service talking to members of the congregation over coffee during which she was shown the development plans for the church.



Left Bishop Viv with Jeremy. *Above:* Jim Heavens explains the proposals for phase 2 of our development plan. *Below* During the service





BITTON REMEMBERS

A well attended Service of Remembrance took place on 14th November at St Mary's. Wreaths were laid at the Village War Memorial by local councillors and Royal British Legion Representatives. This year marks the 100th anniversary of the founding of the Royal British Legion, celebrated in a special display by Sarah Craddock (right).





Lockdown Lightbulb



**Jodi & Jemma
outside The
Plant Barn**

It was lockdown which led the two sisters Jodi Smith and Jemma Smith (both married to a different Mr Smith) to set up Bitton's newest shop, the Plant Barn. Both have always loved gardening, and when their gardens were full of plants, they began to grow houseplants.

“Our husbands suggested we start to sell our plants, but you need an authorised plant permit to sell plants which is very expensive. We wanted to save up for this and thought the way to start was to sell plants rather like a garden centre.” Jemma, the White Hart proprietor, continues: “The pub was not open in lockdown and the shed was a derelict space, so we decided to set this up as a plant barn to bring in some money. The shed was crammed with junk, and it took several tip runs to clear it, then we had to take the roof off and repair it as well as raising the floor. Finally, we were ready to open on 29th May and our business has been growing ever since.”

“We also sell from our website www.theplantbarn.co.uk, Facebook and from our Instagram site we were approached to sell on Candide –the best online gardening marketplace. The business is definitely expanding!”

Focal Point, December 2021

“Our most popular plant is the Swiss cheese plant, *Monstera Deliciosa*. We recommend the ZZ plant, *Zamioculcas zamiifolia*, to those customers who are worried they might kill their plants – these are impossible to kill, hardly need watering and are low light tolerant. The aspidistra, most popular in Victorian times, resting on top of the piano in the parlour, can also cope with considerable neglect!”

“We stock rare plants too, such as the ghost cactus, *euphorbia marmorata* variegata and the African parachute plant, *Ceropegia Sandersonii*. Plants are beneficial for health – mother in law’s tongue is an air purifier, and peace lilies clean toxins out of the air. Many people became interested in growing house plants during lockdown, in a comparable way to having a pet: a plant is something to care for, and competitive plant growing was born!”

“We try to keep our prices very reasonable, starting at £1.95 for a succulent, and sell many gifts such as air plants in an open glass terrarium for £6.95. We like to offer a doctor service, so we can advise people on their plants and people often bring in favourite pots to fill with a nice plant. We also sell pretty pots, and a new line is hand made coloured macrame for plant pots, as well as crochet cactus cushions!”

The plant barn is great fun to visit, Jodi and Jemma are very enthusiastic and full of useful tips and inspiration. The barn is located next to the White Hart and is open on Thursdays 10-3, Fridays 10-6, Saturdays 10-6, and Sundays 11-4 and is a delightful new addition to Bitton. *Sarah Heavens*



Steve Painter Decorating Services

A family business for three generations offering professional exterior and interior painting and decorating services locally

- ❖ Traditionally trained
- ❖ Quality workmanship
- ❖ Paperhanging specialists
- ❖ Friendly and reliable
- ❖ Competitively priced
- ❖ No VAT added

Contact Steve on 07853 250035

or 0117 956 5190

M.C AUTO REPAIRS

***MOTs *SERVICING**

***CLASSES 4 + 5 + 7**

***REPAIRS *WELDING**

***BODYWORK**

Telephone: 0117 947 7405

Unit 4d Kingsfield Lane

Longwell Green, Bristol BS30 6DL

The Bitton Calendar 2022

using images of

Bitton Gardens Through the Year

taken by Gardening Club Members during Covid
and

Raising money for the annual planting of the *Flowers on Bitton Bridge*



**FREE
Envelope
to Post**

Or
from

**Bridget Hetzel
at
Church Farm
Church Road
0117 932 9939**

or text order to
07980882393

or email order to
b.hetzel@btinternet.com



Available
NOW
from

THE PLANT BARN

at

**The White Hart Pub
Bitton High St**



**Buy one for you and more for your family and friends - they make perfect
Christmas Gift**

Church Mice support Development Plan



Church mice are notoriously poor. But not the Bitton church mice – they are sleek and plump and very well dressed. They don't scuttle furtively under the pews and behind the hassocks; they parade proudly for all to see. Or they will do soon for by Christmas time there will be a tableau of carol singing church mice on display at St Mary's.

The Bitton church mice are knitted creations from the tips of the ears to the ends of their tail all made by Janet Ivens' knitting group. It's no easy task – there's a minimum of ten fiddly pieces: two ears, two arms, two feet, a head, a body, a tail and then the clothes and accessories such as hat and scarf. The knitting has, of course, to be of a high standard; loose knitting simply won't do. Once knitted, the pieces have to be sewn together and filled with stuffing, and suddenly there's a mouse character.

Focal Point, December 2021

Janet's group have been hard at work since September with the aim of making something to entertain us at Christmas and at the same time raise awareness of the Development Plan. Already word is getting round; there are going to be some bellringer mice, some history group mice, some garden club mice and maybe more. You'll have to wait till the spring to see the full collection of tableaux. Keep watching!

But Janet's knitting group is far more than a mouse production line. They've been meeting since 2008, their aim to knit for charity with donated wool. Their achievements are wide-ranging and amazing. They've made hats for the troops to wear under their helmets in Afghanistan (they had to be pure wool); hats for babies in the RUH premature unit each with a traffic light pompom to indicate the level of monitoring needed; and ear muffs for dogs to protect them on bonfire night. They've made school jumpers for the poor in African countries where children are not allowed to attend without school uniform. They've even knitted a pullover for a local gentleman, not part of a uniform but just what he needed to keep him comfortable and cosy.

Most recently they've been knitting squares to make blankets – bright and cheerful and warm – for patients at Southmead. For dementia patients they've made twiddle muffs. What are they? Muffs with zips and buttons and bobbles to keep anxious hands occupied. And they've knitted at least 300 teddy bears for the dementia patients. Recently a nurse at Southmead got in touch with the group to tell them about one old man on the ward who was lying in bed and weeping. He wasn't in pain and he couldn't explain what was wrong. The nurse gave him one of the teddy bears; within minutes he had stopped crying and was chatting to his teddy.

Janet's group will soon return to their charity knitting. The church mice are something of a temporary side line but one which we shall all be able to enjoy.

Nicola Bennetts

Welcome to Sharon Gleed



Hello, my name is Sharon Gleed. I am married to Edward, we have two grown up daughters and a very exuberant black labrador called Theo!

I have come to train at St Barnabas, St Anne and St Mary's as part of my final year's training for ordained ministry with Sarum Theological college, Salisbury. I am studying full time for a BA in Theology, Ministry and Ministry. The course is made up of a mixture of residential learning at the college in Salisbury, a placement in a training church and distance learning study.

Prior to starting my full time training, I was a teacher at a primary school in Mangotsfield, where I taught for eleven years. Before that, I taught for the school for the Deaf in Bristol.

I love animals and really enjoy spending time gardening and walking in the countryside. I also enjoy creative activities like painting, when I have the time!

I am very much looking forward to getting to know you and learning about ministry and growing together in faith.

Every blessing,

Sharon

You are invited to a

BURNS' SUPPER

on
Saturday 29 January
at 7.30pm
at **St Mary's Church**
Bitton



Piper and Scottish Entertainment
Two course haggis supper
Bar available

Tickets Adults £12.50 Children £5
from the Gibsons 0117 932 2122
kenandjillg@gmail.com

In support of
St Mary's Church



Christian Aid Christmas Appeal 2021

Shall I give chocolates or scent? Shall I choose a book or give a book token? Shall we buy a real tree or an artificial one? At Christmas time we have dozens of choices to make. But we don't expect to have to choose between drinking dirty water or having not a drop to drink.

No-one should have to face such an impossible choice but this injustice is a reality for many families on the frontline of the climate crisis. That's the focus of this year's Christian Aid appeal, in particular on Adut Mariu of South Sudan. Until recently Adut had to fetch water from the river, water which was dirty with animal dung and liable to give disease to Adut and her children. But now her life has been transformed by a borehole built by her village with support from Christian Aid. With our gifts Christian Aid can help other villages to build boreholes.

There will be donation envelopes in the pews over the Christmas period. Alternatively you can give online (christianaid.org.uk). Please give generously and take a moment to fill in the Gift Aid form turning every £1 into £1.25.

Nicola Bennetts

Christmas
Appeal 2021



Dirty water or none at all?

Climate chaos in South Sudan forced Adut to give her children this dirty river water.

Not anymore. Adut now has access to a borehole. That means clean water for her children to drink and peace of mind for a loving, determined mum.

Stand with more mums facing impossible choices this Christmas at caid.org.uk/christmas

christian
aid

Christian Aid is a registered charity in the UK (1089151) and in other countries. © 2021 Christian Aid. All rights reserved. Christian Aid is a registered charity in the UK (1089151) and in other countries. © 2021 Christian Aid. All rights reserved. Christian Aid is a registered charity in the UK (1089151) and in other countries. © 2021 Christian Aid. All rights reserved.

Fizpop Event explodes in Church—

to everyone's delight

A flaming hand was one of the more spectacular moments of the Fizpop science workshops at St Mary's on Saturday 20th November.

Two groups from the Meadows came to enjoy science as fun. Rainbow Bubbles was for those at Key Stage 1 and they began by wearing special glasses showing rainbow colours as they watched bubbles. There were sticky bubbles and butane bubbles (for flaming hands) and a hydrogen balloon bubble which exploded with a dramatic bang when put close to a candle.

The group made their own bubbles with water and bicarbonate. They listened to the fizzing and they tested it with their little finger observing that it was very cold. Finally they made sherbet to take home. Maybe some packets were sampled before they got home.

The Key Stage 2 group learnt about Our Sensitive Earth. They observed the Ph changes as liquids were mixed and they conducted their own tests on prepared samples. They also had their share of flames and explosions.

The workshops, hosted by St Mary's, were sponsored by Asda and we were pleased to meet Susan Grant from the Longwell Green store who came to enjoy the fun. There will be two more workshops in the spring. Anyone interested in attending should get in touch with Nicola Bennetts on 9324696.



The flaming hand

History Group

Hannah More

— *woman of influence*



Above— Hannah More in her later years.

Below right—Jo Gordon

Rising COVID cases at the end of October meant that the History Group meeting planned for St Mary's was moved to Zoom . But that did not diminish the enjoyment of those who "zoomed in" to hear Dr Jo Gordon of the Hannah More society talk about her eponymous heroine.

Hannah More's name is generally well known in Bristol and the south wets, but few have known of the extent of her influence and her lasting effect.

Her modest background and means were no barrier to her rise to influence and activity. Starting by writing plays that were suitable for young ladies and the founding of a school in Bristol, she worked through a number of influential men raising money for charitable causes and particularly in setting up schools in the south west. A friend of William Wilberforce she provided much of the intellectual case for the anti slavery movement and for the support of the poor in this country, a factor that was underplayed by her biographers.

The talk was excellently presented with stories of people from the time and well illustrated.

The next meeting will be in St Mary's Church on 7 December, when the subject will be:

The Ellacombe Chimes: a pitched battle between the villagers and the curate.



It's so spooky

Halloween 2021 In Bitton and a great show of carved pumpkins and other spooky features were on display. A small army of *trick or treaters* was also spotted .



News from Bitton WI

We were able to meet on November 8th when we combined our Annual General Meeting with a very entertaining speaker. Sylvia read the minutes from the previous meeting, then Jean thanked the committee members for their help during the past year and Barbara gave the financial report, saying that hopefully we will be able to hold some fund raising events during 2022.

We will be having our Christmas party at our next meeting which will be on December 13th starting at the earlier time of 1pm and there will also be a Carol Service on December 17th at 2pm in St Mary's Church.

Jean then introduced Dorothy Cook who told us about her life as a midwife. Dorothy's life in midwifery began forty years ago and during that time she has delivered over 3,000 babies, in Finland, Saudi Arabia and Scotland and Dorothy's daughter is now also a practicing midwife. Dorothy has also worked as a midwifery lecturer at U.W.E. and has found that the television series Call the Midwife has increased the number of people wanting to become midwives. It takes 3 years to become a midwife and unfortunately there is a shortage, because people do not find the job as satisfying as it used to be.

Dorothy said that one of her most unusual deliveries was in a tent on the chalk white horse near Chippenham with flowers, fairy lights and music. Deliveries in hospital can be, if possible, what the couples would like, with electric candles, music and even birthing pools, and before Covid more than one person could be present. It has certainly changed from the time when most of our members had their children.

Dorothy gave some very graphic accounts of her time in Saudi Arabia and we all thought that we would prefer to give birth in Great Britain, and all agreed that it is lovely to hear the first cry of a baby. There were many

Focal Point, December 2021

questions from members before Barbara thanked Dorothy for a very interesting and amusing talk.

The weather is becoming colder and the nights are becoming longer so I thought the recipe this month could be a nice warming Leek and Stilton Soup (recipe on the next page).

I hope you enjoy making this soup and that it will warm you up on the cold days ahead.

I hope to see many of you at the Christmas party and Carol Service, until then please stay safe.

Lyn Coles



Advertising In Focal Point (12 months from Jan)

Full page is £175.00

Half page is £105.00

1/3 page is £85.00

Other rates available for shorter periods



Soot n Sweep

For all your chimney sweeping needs

All types of chimneys flues &
AGAs swept and cleaned

Contact Nick Wilcox
07983 215312 or 0117 949 2258

NACS qualified & certificates issued



The WI Recipe:

Leek & Stilton Soup

Ingredients

2oz/50g butter
1 onion chopped
1 large potato diced small
1 leek cleaned and chopped
1 heaped tablespoon plain flour
1 pint chicken stock
5 fl oz dry cider
4oz/100g Stilton cheese grated
10 fl oz. milk
1 tablespoon double cream

Method

1. Melt the butter in a thick based saucepan, then add the prepared vegetables and some salt. Cook gently with the lid on for 5-10 minutes to draw out the juices.
2. Stir in the flour to absorb the juices and when smooth gradually pour in the cider stirring all the time. Add the chicken stock, cover the pan and simmer gently for 30 minutes.
3. Add the milk and Stilton and re-heat, stirring until the cheese has melted and the soup is just below boiling point. Taste and season with salt and pepper then stir in cream. At this point you can purée the soup in a food processor or keep it as it is.

Just **KIM**
*Unisex Hairdressing with
Beauty Room & Solarium*

*188 High Street
Oldland Common
Bristol
BS30 9QQ*

Tel: 0117 932 3539



Bendrey Bros

TIMBER RETAILER SINCE 1890

Your local stockist of:

- Fencing Materials
- Graded Building Timber
- Timber & Composite Decking
- Sleepers & Landscaping products
- Gates - Residential & Agricultural
- Timber Claddings
- Fast Local Delivery Service, or collect from our yard

Opening Hours:

Monday - Friday:
8.00am - 5.00pm

Saturday Morning:
9.00am - 12.00pm

www.bendreybros.co.uk

☎ 0117 9674382

The Sawmills, Bath Road, Bridgegate, Warmley, Bristol, BS30 5JW



Transforming Church Together

The outcome of the diocesan survey on transforming church was the main subject for discussion at the October meeting of the Deanery Synod.

Over 1000 people had responded, much higher than in previous surveys and to a wider demographic group.

The Archdeacon of Malmesbury, Christopher Bryan, attended the meeting and went through some of the values that are central to the

Transforming Church initiative around which the survey had been built:

- ◆ **Openness:** Meaning being welcomeness, inclusivity, community, and safety.
- ◆ **Generosity:** Share with those who are not church members yet and support those already within the wider church community and parish to parish.
- ◆ **Creativity:** Is more than just traditional worship vs contemporary. It's about exploring, rooting, finding new ways and possibilities.
- ◆ **Bravery:** To make change and take risk.

Like any strategic approach the values will have a number of elements flowing from them and these are developing. Up to now the focus of the work had been to talk and listen to what church members have to say

Over the next few months the priority would be to develop the strategy still further, work up the priorities and set up some workstreams to look at how such priorities could be taken forward.

So what's the intention of all this activity? Some of it does get obscured by all the strategy speak, but it is essentially simple, looking at how the diocese can continue to be relevant and play its part on transforming communities through the Christian message and belief. The organising idea is that of being "Here with You". Not a remote organisation but one that continues to work and support.



ST. MARY'S CHURCH DEVELOPMENT APPEAL

"...to make St Mary's a thriving hub for the community, an inspiring place of worship, heritage, pilgrimage and activity - welcoming, accessible and well-resourced."

St Mary's Church has a rich heritage and history, but its future lies in our hands. Can you help to give it a future - one in which it can continue to play a part in the changing life and story of Bitton?

Change has already begun, and the removal of the rear pews and choirstalls has demonstrated its viability as a community resource as well as a continuing place of worship.

The next phase of work seeks to modernise its existing facilities, preserve its heritage and create a building that is welcoming and works for all.

To do this we need to raise at least £375,000. Much of that we hope to raise from national funders, but we are also looking for a sizeable amount to come from events and donations locally.



How to Support the Appeal



You can make a donation through our *Give a Little* donations page, which you can access using the QR code below.

If you would prefer to give a cheque, please make it payable to **St Mary's Church Bitton.**

Please send it to
John Bennetts,
Treasurer,
Springfield Villa,
Brewery Hill, Upton
Cheyney, Bristol,
BS30 6LY.





The Christmas Quiz

This year's Christmas quiz is a cryptic one, all answers have a Christmas theme.

Carolyn, quiz setter, wishes all the quizzers a very merry Christmas

No. Clue

1. Which day do you need your gloves on
2. Prickly Buddy
3. Eastern country you can eat
4. A planet, fastener and a cooking pot
5. Cold white males
6. Mixed up serpent
7. Ernie, Ernie and Ernie
8. Funny man Skinner if enraged
9. Preferred container
10. ABCDEFGHIJKMNOPQRSTUVWXYZ
11. Scottish whiskey
12. Au
13. Charles, William and George hope to become these
14. Cocoa bean product Chronical
15. Royal royal highness belonging to me
16. Sheets of A4, A5 that incorporate rhyme, rhythmic speech
17. Famous upmarket poisonous restaurants, in London & Bath
18. Radio ditty on a campanologist's tools
19. They would be mine, (quiz setters) if I lost yn
20. Thinking over a moan

Name:

Contact:

Please send your answers to Carolyn Russell at Martin House, Church Road, Bitton (the yellow house) or email mrsrussell@icloud.com by 15 December.

November's Quiz Answers

Last month's quiz was on fashion designers:

The correct answers are:

1. Coco Chanel; 2. Mary Quant; 3. Victoria Beckham; 4. William Morris; 5. Thomas Burberry; 6. Clare Waight Keller; 7. Donna Karan; 8. Matthew Williamson; 9. Vivienne Westwood; 10. Paul Smith; 11. Gianni Versace; 12. Christian Louboutin; 13. David & Elizabeth Emanuel; 14. Alexander McQueen; 15. Giles Deacon; 16. Flora Scalamandre; 17. Stella McCartney; 18. Alexa Chung; 19. Giorgia Armani; 20. Louis Vuitton

Correct answers were received from:

Frank Gibson; Sue & Rod Nethercote; Pam & Jon Booth; Sarah Craddock; Mary Younie; Sue & Alan Murtagh; Terry Matthews.

This month's prize goes to:

Sue & Rod Nethercote

Acupuncture with Alison Pickering

(BSc LicAc MBAcC)

Five Element Acupuncture, Ayurveda treatments, Nutrition advice, Reiki

Please contact: Alison@theleafclinic.co.uk
Or text 07775 854341 to make an appointment

Covering Bath, Keynsham, Bitton, Kelston, North Stoke and surrounding areas

Fully insured through the BAAC



Graduated from the
College of Integrated Chinese Medicine,
one of the leading colleges in the country.





Based in Keynsham

Fully trained and registered member of the
Guild of Master Chimney Sweeps

Contact Hugh on 0117 9868936
or 07824 508758
www.bristlesweep.co.uk



Robert Pearce has over 40 years' experience
plumbing in the local area



Available for
general plumbing
and repairs

Tel: 07814 607974

Email: robsuep@btinternet.com

Hanney Welding Limited

For all your Welding & Fabrication
requirements

Eastover Works, Golden Valley Lane, Bitton

Tel: 0117 932 2647

Email: martin@hanneywelding.co.uk

The last word



While it is not usually best to start with an apology, I feel I must both to all our many quiz enthusiasts and to Carolyn Russell our quiz setter for the editing errors that made a number of last month's clues impossible to answer. We will try to check these things better in the future.

The second aspect is more a reflection, that I hope our non St Mary's readers will not feel that this and some other recent editions have left them out. This magazine sets out to serve both churches and the residents of the whole Bitton parish. We have of course missed the regular contributions from Stuart Turner and hope that his health improves; but Focal Point also welcomes news and contributions not only from the centre of the village but from Upton Cheyney, Beach and other parts of the parish too.

This month, there has been a lot to report. The visit of the Bishop of Bristol was an important moment for us and we hope that her appreciation for plans to develop and look after St Mary's will help us gain the necessary permissions.

There has been much besides, not only in the unexpectedly large attendance at a very moving remembrance Sunday event, but in demonstrating just how the church can be used more in the future to host ever growing community groups such as the history and garden clubs and with more events like the Fizpop Science activity. So much content, in fact, that Christmas hardly gets a mention, and January's edition will have gone to press before the festivities have even started. Nevertheless may I wish all of our subscribers, contributors and advertisers a very happy Christmas and look forward to continuing to provide Focal point in 2022.

Jim Heavens, Editor



- Design and build
- Building Maintenance
- Renovation
- Refurbishment
- Roofing

K P Wilton & Son Ltd

11/12 Brighton Place, Kingswood, Bristol BS15 1QY

Tel: 0117 967 1207

Email: info@kpwilton.co.uk



ROY PREDDY FUNERAL DIRECTORS

2 Cossham Street, Mangotsfield BS16 9EN (0117) 9562834

We are at your service 24 hours a day

We will help and guide you every step of the way

We will guide you through our choice of funeral plans

We can help and advise you choose a memorial

We are members of the National Association of Funeral Directors

Our other Bristol businesses can similarly help you -

Roy Preddy - Kingswood (0117) 9446051

TB & H Pendock - Hambrook (0117) 9566774

Stenner & Hill - Shirehampton (0117) 9823188

R. Davies & Son - Westbury-on-Trym (0117) 9628954

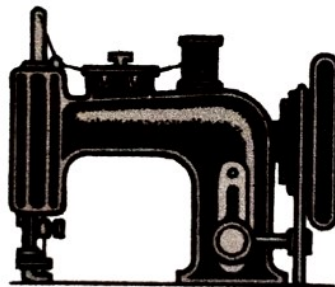
R. Davies & Son - Horfield (0117) 9424039

R. Davies & Son - Bishopsworth (0117) 9641133

Whitchurch FS - Whitchurch (01275) 833441

Part of Dignity Ltd, a British Company

Parker's Sewing Services



**Clothing alteration
and repairs**

Soft furnishings

**Specialist projects
and commissions
undertaken**

Telephone Lizzie : 01179326662

Mobile : 07837126945

Email :

lizzieparkerclarke@rocketmail.com



collingwood
care home for the elderly

“Home from home”

Our new bedrooms have underfloor heating, large fitted wardrobes and en-suite shower rooms

Make an appointment with Wendy or Lizzy and they will be delighted to show you round

Collingwood Care Home
78A, Bath Road
Longwell Green
BS30 9DG

0117 932 4527

www.collingwoodcarehome.co.uk

NORTON TAX SHOPS LTD

ACCOUNTANTS & TAX SPECIALISTS

Are you.... Self Employed?
A Company Director?
A Landlord?
An Investor?

Then we can help!

We offer: Accurate high quality work
Competitive fees
Up to date advice
Friendly qualified staff
Local offices in Keynsham & Kingswood
Help to reduce paperwork
Help with 'Making Tax Digital'

Please call us on **0117 9860960** to arrange a free appointment.



Website: www.nortontaxshops.co.uk

Bitton Motor Company

Bath Road Bitton
Bristol BS30 6HY



MOT
Testing Centre



Cars Bought and Sold

Servicing Repairs Engine Tuning
Welding Tyres Exhausts Cam belts

Telephone: (0117) 932 8686