

Focal Point

July 2021

£1



Ellacombe Chimes
International Bicentenary
puts the spotlight on Bitton

KNOWLEDGE. INTEGRITY. RESULTS.

When it comes to moving home, you need professionals who are trained and trustworthy, with in-depth local knowledge and the technology and connections to market your property.

As exclusive Members of The Guild of Property Professionals we can meet your needs and clearly stand apart from the competition in both sales and lettings.

Contact us for a free confidential marketing appraisal

DAVIES & WAY

CHARTERED SURVEYORS • ESTATE AGENTS

SOLD

SUBJECT TO CONTRACT

0117 9863681

daviesandway.com

Keynsham Office

1 High Street, Keynsham

Bristol, BS31 1DP

0117 9863681

keynsham@daviesandway.com

Saltford Office

489 Bath Road, Saltford

Bristol, BS31 3BA

01225 400400

saltford@daviesandway.com

www.daviesandway.com



Your property in Park Lane

Showcase your property to the
lucrative London market



By instructing your local Fine & Country agent, your property will not only be marketed locally and regionally, but nationally and even internationally via Fine & Country's Head Office and Showroom located at one of the most prestigious addresses in the world – 121 Park Lane, Mayfair, London W1.

With over 40ft of window display on Park Lane, we not only reach a lucrative buyers' market other agents cannot, we also market all Fine & Country properties 24/7 through touchscreen technology, enabling customers to browse the details of Fine & Country properties from around the globe, even when the office is closed.

For more information on promoting your property in our
Park Lane office or for a free valuation, please contact:
Homes of Bath Fine & Country, 36 Gay Street, Bath, Somerset, BA1 2NT
01225 320032 | bath@fineandcountry.com
homesofbath.co.uk | fineandcountry.com



FONTHILL
garden centre



A family run business that's been growing since 1967.

www.fonthill-lakeside.com



BATH ROAD, BITTON. 0117 932 3110
OPEN MON-FRI 8.00-5.00 SAT 9.00-5.00 SUN 10.30-4.30



Focal Point

Bitton Churches' Magazine

July 2021

A monthly church newsletter serving
Bitton, Swineford, Willsbridge,
Upton Cheyney & Beach

Published by St Mary's Church, Bitton and
the United Reformed Church, Upton
Cheyney.

Printed by The Mitre Press, Unit 2 Fantasie
Buildings, Waters Road, BS15 8BE

To advertise in Focal Point
please contact Roger Tilley
rogerjohntilley@gmail.com

FOR ALL FOCAL POINT INQUIRIES

Editor: Jim Heavens

Phone: 07720 248534

Email:

jimheavens@outlook.com

Website:

www.stmarysbitton.org.uk

*Deadline for the August
magazine is:*

Friday 18 July 2021

In this month's Focal Point:

Page 14	<i>Minister's Letter: "For I am with you always"</i>
Page 30	Wi-Fi comes to St Mary's
Page 20	<i>Ellacombe Chimes Bicentenary— Bitton's international celebration circles the globe</i>
Page 25	<i>Ellacombe Chimes Bicentenary—</i> Development Appeal Launched
Page 28	<i>Ellacombe Chimes Bicentenary—</i> Chimes Bicentenary generates publicity
Page 30	Church Fête all set for 11 September
Page 33	Sales colleagues become neighbours
Page 34	BANES to decide on Wessex Water proposal this month
Page 36	WI News
Page 40/41	This month's quiz
Page 43	Last word

Churches' news and information about acts of worship pages 8 to 13

Cover photo: Jules Hyam, BBC Points West Reporter, with Sue Elliott and Ada Thomas after a live broadcast from St Mary's on Friday 25 June. More coverage on pages 28 and 29.

S M Wilkins Electrical Services

- ♦ **FREE QUOTES**
- ♦ **COMPETITIVE RATES**
- ♦ **FULLY INSURED**
- ♦ **SIX-YEAR WARRANTY**
- ♦ **OVER 20 YEARS' EXPERIENCE**

- Testing & inspection
- Landlord certs (EICR)
- Fault finding/repairs
- Fuse board replacement
- Extra sockets/lights
- Cooker/shower installation
- Smoke alarms
- Security/outdoor lighting



Mobile: 0771 218 9118



Email: smwilkins.electricalservices@gmail.com

A small and friendly practice providing
the very best care for animals and their owners

OLDLAND HOUSE Veterinary Surgery

Stephen Pullan, BVSc, MRCVS
103 High Street, Oldland Common, Bristol
Monday-Friday 8am-7.30pm: Saturday 10-12am
Tel: 0117 932 3100



E. C. Alderwick & Son Ltd
Funeral Directors

Serving Bristol since 1945

Kingswood - 11 Regent Street, Kingswood, Bristol, BS15 8JX

Tel: 0117 967 3609

Hanham - 71 High Street, Hanham, Bristol, BS15 3DG

Tel: 0117 935 3746

HRD Hardware

New owners Jim & Janette
look forward to welcoming you

Plumbing & electrical supplies
pet foods - paints - tools - gifts
fabric dyes - paraffin

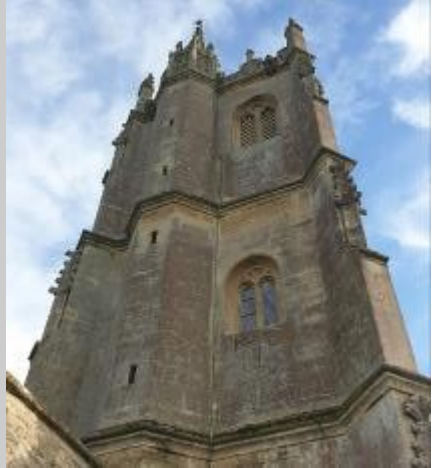
20 Westcourt Drive, Oldland Common

- Churches & Services -



ST MARY'S CHURCH, BITTON

www.stmarysbitton.org.uk



Vicar:

Rev Jeremy Andrew
The Vicarage, Warmley
0117 967 2724

Ordained minister:

Rev Richard Humphrey
Splinters, Kenilworth Drive
Willsbridge **0117 949 0502**

Lay ministers:

Ken Gibson, 8 Church Road,
Bitton
0117 932 2122

David Bailey, Westover,
Bath Road, Bitton
0117 932 8949

Churchwardens:

Pete Midgley
30 Kenilworth Drive, Willsbridge
0117 932 6898

Jacqui Harris
29 St Anne's Drive, Wick
0117 937 4706

Services for JULY 2021

Services at St Mary's

Numbers are limited so if you intend to be there please send an email with the number attending from your family group to Jacqui Harris at timjaqui@aol.com or phone 0117 937 4706

Sunday, 4 July

Fifth Sunday after Trinity
10.30 Parish Communion

Sunday, 11 July

Sixth Sunday after Trinity
10.30 Morning Worship

Sunday, 18 July

Seventh Sunday after Trinity
10.30 Morning Worship

Sunday, 25 July

Eighth Sunday after Trinity
09.30 Family Café Church

Online services

Links to the services will be posted at www.stmarysbitton.org.uk

If you are unable or do not wish to attend church for services, a benefice service is available online both midweek and on Sundays. The service is recorded and available through YouTube. A link to the service is available on the front page of the St Mary's website www.stmarysbitton.org.uk



UPTON CHEYNEY United Reformed Church Services for July 2021



Sunday services are at 3pm

Sunday 4th Service led by Janet Donnelly

Sunday 11th Service led by Richard Humphrey

Sunday 18th Service led by Neville Lintern

Sunday 25th Service led by Margaret White

**In addition there will be a coffee afternoon on Tuesday
27th at 2pm**

St Mary's Matters



Pete Midgley

I've written before about the remarkable way in which St Mary's draws together the past, the present and the future. The church building, parts of which date back to Norman times, has a story of it's own to tell, but recent excavations outside the south wall are beginning to reveal an archaeological history beneath the church dating back at least to Roman times. As I write, we are soon to witness the bicentennial celebration of the Ellacombe chimes on June 26th, looking back 200 years to the invention of this amazing device. This event will also mark the opening of the St Mary's Development Appeal as the church looks forward into the 21st Century.

The archaeological work is not yet fully completed, and it is hoped that it will be possible soon to involve local people in a "community dig" as part of ongoing investigation. Who knows what exciting findings this might reveal? At some point there will be a presentation of all the findings so that everyone can see what has been discovered.

Reading the story of the church is something we will be developing through the use of QR codes linking to short Youtube clips telling about a whole variety of aspects of the church such as the Ellacombe chimes, the Sovonarola chair and the Seymour cloth. You'll be able to pick these up on your phone or tablet through the wi-fi connection that has recently been installed. How 21st century is that!

The Ellacombe chimes event not only places St Mary's historically, but also geographically. In 200 years the use of these chimes has spread worldwide and on 26th June they will have been rung around the world from New Zealand, via St Mary's to Canada. There's more on this elsewhere in the magazine.

Focal Point, July 2021

Speaking of the 21st Century, it is our responsibility not only to expose the enormous heritage of St Mary's church, but also to secure it's future. The St Mary's Development Appeal is being launched to raise money to develop the building of St Mary's so that it will provide a space suitable for inspiring worship and community use in the decades to come. If you would like to donate, please follow the link on the St Mary's website – www.stmarysbitton.org.uk.



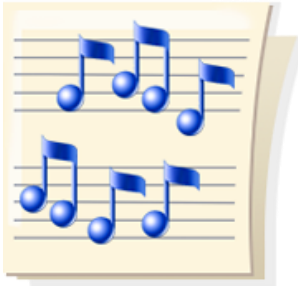
St Mary's Family Café Church

**Fourth Sunday of the
month at 9.30 am**

An informal café style event with time to relax and listen to music from keyboard and flute. Café Church is designed for families with primary and pre-school children. A Bible story is followed by a craft session and refreshments are available throughout.



**Subject to the
lifting of COVID
restrictions -
Join us on
Sunday 25 July**

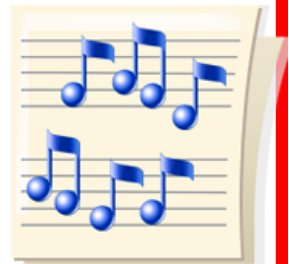


**Sunday
25 July 2021
4.30 to 6.00**

**James and Jemma
invite everyone to join
them for
Songs of Praise in the
White Hart Garden**

**with Oldland Brass and
the St Mary's Music
Group**

**Barbecue
available from
4.00pm**



Rev Richard Humphrey

***“For I am with you
always”***



Dear Friends,

As I write this in mid-June we are still waiting to see, in the light of new variants of Covid 19, if all restrictions will be lifted on June 21st. As you read this in July, that question will already have been answered. And for many of us of course, the 23rd March 2020 will be one of those dates we will always remember—the day we were told to “stay at home”; and life went on hold. But now, as we prepare to press the “play” button again, how will we reflect on the events since then, and how will our idea of “normal” today compare to the “normal” of pre March 2020? What have we learned about ourselves, and our relationship with God, Creation and each other?

I, for one, have been amazed at how inventive and creative people became throughout this pandemic, finding ways of caring and sharing and communicating through Zoom and social media. How people with little experience of technology embraced Zoom, Teams and Facebook so readily! Whatever problems there are with social media—and there are many—there is no doubt that it has enabled people to come together in a way that has been of immense benefit. We have even learnt to worship in new ways, and have possibly even been reaching more people than usual with the good news of the Gospel.

This pandemic struck also at a time when concern for the environment and the future of our world was gaining momentum, forcing us to re-evaluate how we have been using—or rather abusing—God’s wonderful gift of Creation. I remember well that first lockdown when the only wings in the sky were those of the birds whose songs could be heard so clearly with no competition from the noise of traffic. And how much cleaner the air seemed, how much brighter the colours of the flowers.

I wonder in the light of that if we appreciate now what Margaret Thatcher meant when she said “No generation has a freehold on this earth. All we have is a life tenancy with a full repairing lease.”

We have to realise too that pain and suffering are almost as old as Creation itself, whether in the form of personal tragedy, or in global events such as world wars, the Spanish flu of 1918/19, or the Coronavirus pandemic of 2020. And in each case the cry that often goes up is, “Where is God in this? Why did He let this happen? Is he indifferent to our suffering?” Without doubt our faith can be shaken and challenged by events like these, but when we look at what He did for us in Christ, we realise just how close God is to those in anguish, to those who are bereaved and grieving. In giving up His own Son He knows all too well the pain of love and loss. As St. Augustine said, “God is closer to us than we are to ourselves”. The sacrifice of Christ totally refutes the idea that catastrophes and disasters are the expression of God’s indifference, anger or wrath. How can they be when God’s total being is love? As St John the Evangelist said, “There is no fear in love. But perfect love drives out fear because fear has to do with punishment”. (1 John 4:18.)

It’s that love of course that is the key to everything. It’s that love that gave rise to so much that has been positive throughout this pandemic, from the well-publicised actions of people like Captain Sir Tom to the heroic efforts of those in the NHS and the caring services, and to those individual, unsung acts of service and care that took place in all of our communities and lives. And it was through this perfect love that God came to stand beside as Jesus Christ, to experience and understand our suffering, not to be apart and remote from it. If we want an answer to the question “where is God”?, then we need look no farther than Calvary and the Cross. “This is how we know what love is: Jesus Christ laid down his life for us.” (1 John 3:16.)

Now, of course, it is in the light of that love that we look both backwards and forwards. How will we acknowledge and remember in prayer all those who in this pandemic have lost loved ones, particularly without the consolation of normal funerals? Those whose wedding plans or plans for baptisms had to be postponed? Those who for months at a time were parted from those they love?

And what have we learned about what we need to discard, and what we need to take forward into the future?

And as we look towards the future, only by grounding everything we do in that deep and unconditional love will we truly be able to shape a new “normal” and build communities and a world, in line with what God really wants for all of His creation; by asking as we take each step “what would Jesus do here”? And above all, this is also perhaps a time to remember that we are not doing this alone. Jesus Christ calmed storms, cast out demons and healed the sick, and he was called Immanuel- “Christ with us.” He is with us now and his firm promise is that “surely I am with you always, to the very end of the age.” (Matt.28:20.) His part is-and has always been- to save. Ours is to trust.

Every blessing.

Richard.

Acupuncture with Alison Pickering

(BSc LicAc MBACc)

Five Element Acupuncture, Ayurveda treatments, Nutrition advice, Reiki

Please contact: Alison@theleafclinic.co.uk

Or text 07775 854341 to make an appointment

Covering Bath, Keynsham, Bitton, Kelston, North Stoke and surrounding areas

Fully insured through the BAc



Graduated from the
College of Integrated Chinese Medicine,
one of the leading colleges in the country.



Wi-Fi comes to St Mary's



Small, but perfectly formed—A small antenna on the roof of the chapel is all that is needed. Inside the church the mesh system can provide Wi-Fi to multiple devices simultaneously.

It may be one of the oldest buildings in South Gloucestershire, but that is no barrier to being fully up to date with connections. St Mary's now has a fully functioning Wi-Fi broadband connection through a small and discrete antenna, using 4G technology, with a mesh system inside the building to ensure all areas are fully covered. You can log on with our dedicated QR code.

If that all sounds a bit technical, don't worry. All you need to do is log on in the usual way. The Wi-Fi connection is very visible, and the password is displayed in the church.

The decision to install wi-fi was made by the Parochial Church Council last April, but has taken a couple of months to complete. Using a 4G system avoids the need to bring a cable across or under the churchyard. It is hoped to use the installation to be able to make better connections and use a wider range of materials in services; but particularly, to enable a more extensive range of media to tell the church's history.

SUSTAINABLE FITNESS

A WARM WELCOME FROM
SUSTAINABLE FITNESS.

WE ARE A SMALL, INDEPENDENT HEALTH AND
FITNESS COLLABORATION LOCATED IN UPTON
CHEYNEY - CLOSE TO BATH, KEYNSHAM AND
EAST BRISTOL.

WE WORK WITH CLIENTS OF ALL AGES AND
ABILITIES INCLUDING THOSE WITH PRE-
EXISTING HEALTH CONDITIONS OR CONCERNS.

WE OFFER:

- SPORTS & REMEDIAL MASSAGE
- SOFT TISSUE THERAPY
- PHYSIOTHERAPY
- PERSONAL TRAINING
- EXERCISE PROGRAMMES
- EXERCISE CLASSES

GET IN CONTACT TO FIND OUT HOW WE CAN
BEST HELP YOU:

JO@SUSFIT.CO.UK
07845 557 862

WWW.SUSFIT.CO.UK



@SUSFITUK



Bitton Village Residents Association

Invites you to

BITTON OPEN GARDENS

On Sunday 4 July 2021 from 12 noon
Assuming Government Covid regulations will allow us
Bitton Gardening Club is going ahead with Bitton
Open Gardens

We will be following any necessary restrictions to
ensure that the event is Covid safe

Gardens will be open to view from 12noon to 5pm
when we hope the sun will be shining and the gardens
will be looking their best. Please note, however, dogs will
not be allowed in the gardens this year, except for Guide
Dogs.

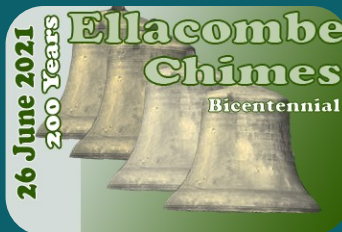
As always there will be a Plant Sale and Tea & Cakes
serving from 2pm in the garden at Church Farm.
Programmes with a list of the open gardens and a map, will
be available from June 27th at the Village Shop, the White
Hart, Fonthill Garden Centre, the Swan at Swineford and
the Upton Inn.

We will also e-mail the programme
to you if you are on the BVRA mailing list
If you have any plants that you could donate to the plant
sale, we would love to have them. Please can you clearly label
them with the plant name and bring them along to Church Farm in
the morning.

For more information contact
Sue Murtagh Tel 932 6232 or e-mail
Sue.murtagh@btinternet.com
Gabriel Frankcom Tel 932 6158 or e-mail
gabriel01.wood@gmail.com
Everyone is welcome so do bring your friends

This event is Free
but you will need cash for the Tea & Cakes and the Plant

Bitton's international celebration circles the globe



A toast to the chimes—Sarah Heavens, selling glasses of Prosecco—the event had to follow COVID safety guidelines.

Photo—Tim Sykes

The celebration of the 200th anniversary of the Ellacombe Chimes took place as planned on 26 June. Only minor changes were needed to the programme as a result of continued COVID 19 restrictions and the final tally of participating churches and other institutions is still to be reckoned. A number of churches with chiming devices only decided to join the celebrations in the days (in some cases, hours) before the event itself. Many of the participants streamed their chiming live on Facebook or uploaded a video later.

From New Zealand to Canada

The celebrations started as planned at noon in New Zealand and was picked up by participants in Australia. Posts were placed on Facebook in what was the small hours in England (noon in New Zealand is 1 am in the morning in England).



Noon at Bitton—Tower Captain , Sue Elliot plays the Ellacombe Chimes where they were first installed at St Mary's Church *Photo—Richard Humphrey*

A last minute contributor was St Andrews Church in Hong Kong which, with the Church of the Holy Name in Pune, Maharashtra, in India, meant that there were two Asian contributors to the event.

Most of the participants were from the UK and Ireland so chimes were heard in many places around the country. After a gap, the trail was picked up a few hours later in St John's, Newfoundland before other participants in the US and Canada joined in. The final chimes were rung in St James, Anglican Church, Vancouver, on the Pacific coast at 8pm British time.

Party Atmosphere at Bitton

In St Mary's churchyard over 150 people gathered in the sunshine to enjoy a picnic and hear the chimes ring out at 12 noon. There was definitely a party atmosphere as a number of stalls sold chimes memorabilia, drinks, and ice creams. Best of all was a display of artwork from the Meadows School, with flags of the various countries taking part as well as "rules" for bellringers.



Across 4 continents:

Chimes were sounded (clockwise) in Timaru, New Zealand; at St Michael & All Angels, Corkberg in East Cork, Ireland; in the St George Memorial Church, Oshawa, Ontario, Canada; and at St Andrews Church, Hong Kong.





Ellacombe descendants at the celebration in Bitton: Patricia Allen, Chloe, Freya, Piers and son, Pippa and Peter Cockey

The chimes were rung by Sue Elliott, the Tower Captain, who played the tune known as “Ellacombe” on the chimes. (The tune is reputed to be dedicated to H T Ellacombe by the composer, William Henry Monck.) Some visitors were able to try the chimes for themselves – under strict supervision of course.

Among those attending were descendants of H T Ellacombe, the Cockey family. Herbert Cockey, the Vicar of St Anne’s, Oldland, married Frances Ellacombe granddaughter of H T Ellacombe and daughter of Canon H N Ellacombe who was then vicar of Bitton. Herbert Cockey was himself an enthusiastic bell ringer, the pursuit of which may well have brought him into contact with the Ellacombes.

For those wanting a solid souvenir of the anniversary a special commemorative book has been produced by the Bitton History Group, containing information about the chimes and with contributions from many of those participating from around the world. There are also special bell fridge magnets and “Bellringers’ Rules” tea towels.

First event in nearly 18 months

The event was the first held at the church since February 2020. It is hoped it may be the last under COVID 19 restrictions. As the weather was good

Focal Point, July 2021



Chimes Art— There was a wonderful display of artwork by children from The Meadows School including pictures of the church and flags for each of the many countries taking part.

and the event was outdoors, it was possible for it to go ahead and for social distancing to be maintained.



Bitton Churchyard—There was something of a party atmosphere in this first event at the church in nearly 18 months.

Photo—Tim Sykes

The event also marked the start of the St Mary's Development Appeal to raise funds for reordering of the church to update its facilities and make it more of a community resource.

Facebook & Instagram

The event can still be viewed on Facebook where Ellacombe Chimes Event is an open group and on Instagram #Ellacombechimes2021.

Development Appeal Launched



Church display— HT Ellacombe was fascinated by the history of Bitton and did much to investigate it and preserve its heritage. But he and his son made many changes to the interior of the church in their time. The display, which also describes future changes will remain in the church all summer.

The celebration of the Ellacombe Chimes Anniversary provided the opportunity to make a formal launch of the St Mary's Development Appeal.

Both Henry Thomas Ellacombe, the inventor of the chiming apparatus and his son, Henry Nicholson Ellacombe, who succeeded him as vicar in 1850, made substantial changes to the church to meet the needs of their time; as well as being keen to investigate and to celebrate the history of the church and its treasures.



It was H T Ellacombe, in particular, who made considerable efforts to rediscover the church's past undertaking excavations in the church grounds that uncovered evidence of a former chapel on the south side of the church which stretched into what is now the garden of The Grange. He also found the stone head and arm of Christ in an infill to a wall, and linked them to the remains of a rood (a statue of Christ on the cross) for which the feet and the head of a serpent were still in place above the chancel arch. Both he and his son, also made significant changes to the church itself (not least to the pews and choir stalls) to support the formal form of worship that was a prominent feature of church life in the nineteenth century. While we may not find all of their work appropriate today, that so much change took place during their time, reminds us that churches have always been subject to change and should inspire us to make the bold changes now needed to update our services and our use of the church.

Some change has already taken place. With the removal of the rear pews and choir stalls we discovered how new spaces can provide the opportunity for new forms of worship and the flexibility for the church to serve other community purposes. This first phase, which also included the commissioning of architectural plans and investigatory archaeology on the

south side of the church, is now complete. Our next focus is to raise the money to start the second phase of the project to reorder the interior of the church. This is planned to make it more accessible (including to people with disabilities), have energy efficient utilities and provide more flexibility. The existing pews, which date from the 1860s will be made mobile, so that they can be configured differently or pushed away when a larger space is required.

Estimates for this work come to £375,400 and the Futures Group are looking to raise the money partly through individual donation but mainly through national funders.

A display, highlighting some of the heritage discovered, the changes made by the Ellacombes, as well as the plans for the future are set out on a display in the church and in an accompanying leaflet. This will be available to see in the church for the remainder of the summer. To support the appeal campaign a new logo and a large banner is on display in the churchyard. The logo supports some of the activities we hope to be able to hold and through the symbol leaves to support a more environmentally sensitive future.

Matt Bressington Plastering Services Friendly & Reliable



All types of Plastering

Rendering

Pebble Dashing

Dry Lining

Coving

Fully Insured

Over 25 years experience

Competitive Rates

Free Quotations

Tel: 0117 9830108

Mobile: 07905 474 966

Email: matt_bressy@yahoo.co.uk

Chimes Bicentenary attracts publicity



Top—Nicola Bennetts being interviewed by ITV. **Below**— the BBC camera is ready to film Sue Elliot and Ada Thomas. (Picture by Nigel Scudamore)

It is not often that events in Bitton attract the interest of local or national media, but last month saw Bitton truly on the map. Both ITV for *West Country News* and the BBC for *Points West* visited the church and filmed the chimes being played by Ada Thomas.



The BBC made it a key feature of their Friday evening programme, with a live relay from the church by reporter Jules Hyam on the eve of the celebration in which Ada Thomas, the youngest bell ringer gave a demonstration of the chimes.

BBC Bristol had also interviewed Mike Gates on the previous Sunday.

There was national interest too, with a feature in *The 1* on the morning of 26 June. The event was also picked up by local media across the country and elsewhere as local bell ringers joined in the activity.

The BBC **Bells on Sunday** on Radio 4, the day after the celebration, featured St Mary's—not the chimes but full change ringing on eight bells.

Above left The giant pole has a camera at its top to provide a stunning overhead view .

Above right—Ada sits at the production controls in the BBC van.
Both pictures by Nigel Scudamore

Below—Ada's performance on the chimes



**Bells on
Sunday**



Church Fête all set for 11 September



Bitton's renowned Church Fête is all set for the 11 September this year. After a year's absence, it is hoped that it will be one to remember. The fête will, of course, include a dog show and many of its regular favourites will be there including Morris Dancers, the Companions of the Longbow and a special Punch and Judy for younger fête goers.

As always some of the most popular stalls are those selling books, clothes, and a wide selection of other goods (The White Elephant). Donations to these and other stalls are greatly appreciated, and a list of contacts is below.

CAN YOU HELP AT THE FÊTE?

There are so many ways you can assist both before after and during the fête – even for just an hour or so. There's the heavy gang to set up and dismantle the tents on the Friday and after the fête closes Programme sellers and stall helpers are also wanted.

If you are able to spare some of your time please contact Helen Pugsley 07767 777019.

Focal Point, July 2021

Books	<i>Sarah Heavens</i>	0117 932 5376
White Elephant	<i>Nicola Bennetts</i>	0117 932 4696
Nearly Nu (clothes)	<i>Annette Vowles</i>	0117 932 6352
Bottles	<i>Sarah Craddock</i>	0117 932 8644
Cakes & Jams	<i>Janet Ballinger</i>	0117 932 4728

Janet would be particularly grateful for donations of empty small jam jars.

Until the church is fully open again and items can be left in the church porch, please don't leave them outside the church door.

For this year's photographic competition - see next page

Fortnum & Mason Hamper is Raffle Prize

Raffle tickets for the annual summer draw will soon be on sale.

This year's first prize will be *The Fortnum's Hamper* full of sumptuous delights. The prize has been generously donated by

Homes of Bath—Fine & Country



Many other prizes will be awarded to the lucky winners. The raffle will, as usual, be drawn during the St Mary's Fête on 11 September.

Tickets, priced at £1 will be available from Barbara Merritt.

St. Mary's Church Fete 2021 Photography Competition

Photographs must be printed and be a maximum size of 20cm x 20cm, it must be your own work and have been taken within the last two years

There are six categories (see below)
and two sections, one for adults (entry fee of £1 per picture)
and one for juniors under 16 (entry fee of 50p per picture)
Colour or black and white photographs accepted



1. Bitton Scenes
2. Nature
3. Life adjusting to Covid-19
4. Hobbies
5. The colour Red
6. Food and Drink

Entries must be supplied in a sealed envelope together with the entry fee, your name, contact number, date the photo was taken, adult or junior entry and category

Entries must be supplied directly to
Martin House, Church Road, Bitton
by 6:30 pm on Friday August 27th
at the latest

All entries and winners will be displayed
at the St Mary's Bitton Fete



Sales colleagues become neighbours—Welcome to Bitton



Picture—Lindon Homes

When you work in sales, it's important to believe in what you're selling, but if you are selling homes you don't have to buy one.

Lucy Gazzard and Craig Davies (above) started selling the new homes at Linden Homes' Bitton Mill development in Bitton when it first launched three years ago. However, they loved the properties and the location so much that they bought new homes at the development and are now neighbours!

Lucy and her partner Lewis moved to Bitton just before Christmas. Lucy likes to hear the water from the nearby river Boyd – "Bitton is so peaceful. There's a real community and it's surrounded by greenery, which is perfect for our dog, Murphy, and the many walks we do!"

However Lucy was not aware that her sales colleague Craig was also thinking that Bitton would also make a good place to call home. Craig and his partner, Katie had been looking for a new home. With room for Craig's daughter, Taylor. "We love our new home. It's semi-rural so we get to enjoy lovely countryside views from our bedroom and take walks in the country.

All the homes at Bitton Mill are now sold. All new residents are most welcome to Bitton and the church community.

BANES to decide on Wessex Water proposal this month



The welcome sign to Bath and North East Somerset sits at the junction of Bath Road and North Stoke Road on the A431, but that does not accurately mark where the boundary between BANES and South Gloucestershire lies. The true border is a couple of hundred yards to the west. As a result it is BANES councillors who will be deciding on the building of a bridge road access from Wessex Water's Saltford Plant to the A431 just east of Swineford.

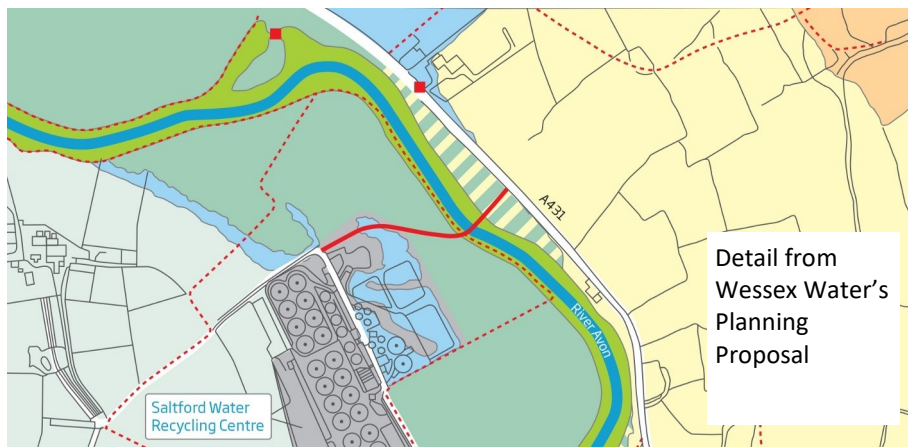
The access road is to relieve roads on the opposite side of the river, but will inevitably mean more traffic on the A431 in Bitton. Wessex Water's impact assessment shows this as being a relatively light increase and only a few heavy lorries each day, but there are fears that this access will become the main entrance route to the plant for employees and may provide the opportunity for increased sized vehicles in the future. There are similar concerns about the environmental impact of the scheme in an area of flooding and that has previously been undisturbed.

Focal Point, July 2021

Objections and comments to the plan have been made by organisations and individuals in South Gloucestershire, but there is considerable support for the scheme in Saltford whose residents are represented by BANES councillors making the decision, while no representative voice is available in the decision from South Gloucestershire.

The Bitton Village Residents' Association and Bitton Parish Council have objected to the scheme and the parish council is particularly concerned not only about impact but the lack of consultation from BANES.

The target date of decision on the scheme is currently 27 July.



Help at Hand

**Private Coaching
For Primary School Children**

Please contact Jean Byers—jean.ab@live.com -0117 932 2578

English and Maths Tutor, Highly experienced , Friendly and supportive
Special Educational Needs qualified—for example, dyslexia, dyspraxia, autism

Tuition currently available online

References available

News from Bitton WI

As I am writing this the sun is shining and it is very hot, I am hoping that the weather will be like this on June 25th, when WI members will be enjoying an afternoon tea at Lower Cully Hall Farm. During the afternoon members will be able to vote on continuing our monthly meetings on an evening, or changing to meeting in the afternoon. I will be able to give the result, and more details in next month's issue.

It has been decided that Bitton WI will stay in line with other WI's, and not return to our monthly meetings until September. It is hoped that by September everyone will be vaccinated and we will have more freedom and hopefully no more lockdowns.

We will be having a stall at St Mary's Fête on Saturday September 11th and this year we will be selling cakes, so hopefully members will supply the stall with some delicious home made cakes.

Another date for our diaries is September 24th when Bitton WI will host a tea party for the Royal Chase group of WIs, tickets were available at the tea party on June 25th if you were unable to attend and would like a ticket please let a committee member know. November brings us a chance to buy some early Christmas presents when we will be having a table at Hanham Community Centre's table top sale. It is nice at last to have something to look forward to, hopefully it will be able to take place.

Now to my usual recipe, this month it is Carrot Cake and I have to thank Sheila once again for the recipe, which I am sure would be a great hit on our cake stall at the fête.

I hope one of our members will make this for our stall at the fête as I am sure it will taste delicious. I will have more details of the forthcoming events next month, until then I hope everyone will stay safe.

Lyn Coles



Carrot Cake

Cake

2. eggs beaten
5fl oz. vegetable oil
3oz. caster sugar
6oz. self raising flour
half tsp salt
1tsp. baking powder
1tsp. cinnamon
6oz. grated carrots
1oz. walnuts
1oz. sultanas

Topping

4oz cream cheese
2oz. butter
8oz. icing sugar
1tsp. vanilla essence
2tsps. lemon juice

Lightly grease an 8 inch cake tin and put a circle of greaseproof paper in the bottom.

Beat together the eggs oil and sugar.

Sieve the dry ingredients and fold into the mixture. Stir in the grated carrots, walnuts and sultanas.

Place on high for 7-8 minutes.

For the topping beat together cream cheese and the butter. Add icing sugar, mix in lemon juice and vanilla essence. Spread over cooled cake.



collingwood
care home for the elderly

“Home from home”

Our new bedrooms have underfloor heating, large fitted wardrobes and en-suite shower rooms

Make an appointment with Wendy or Lizzy and they will be delighted to show you round

Collingwood Care Home
78A, Bath Road
Longwell Green
BS30 9DG

0117 932 4527

www.collingwoodcarehome.co.uk



188 High Street
Oldland Common
Bristol
BS30 9QQ

Tel: 0117 932 3539



Bendrey Bros

TIMBER RETAILER SINCE 1890

Your local stockist of:

- Fencing Materials
- Graded Building Timber
- Timber & Composite Decking
- Sleepers & Landscaping products
- Gates - Residential & Agricultural
- Timber Claddings
- Fast Local Delivery Service, or collect from our yard

Opening Hours:

Monday - Friday:
8.00am - 5.00pm

Saturday Morning:
9.00am - 12.00pm

www.bendreybros.co.uk **☎ 0117 9674382**

The Sawmills, Bath Road, Bridgegate, Warmley, Bristol, BS30 5JW



Absolutely Feet
Caring for your feet, in your own home.

Professional treatment of corns, callus, fungal infections, painful or thickened nails, diabetic foot care, nail trimming etc.

Joanne Nash MCFHP MAFHP
Insured & Registered Foot Health Professional

07881 530600
absolutelyfeet@hotmail.com

June's Quiz Answers

Last month's quiz was about cities.

The correct answers are:

(1) Tokyo, Japan; (2) Manila, Philippines; (3) Norilsk, Russia; (4) Ushuaia, Argentina; (5) El Alto, Bolivia; (6) Jericho, Palestine; (7) Pittsburgh; (8) Hong Kong; (9) Paris, France; (10) Ürümqi, China; (11) Vatican City; (12) New York City; (13) Singapore; (14) Madrid; (15) Istanbul; (16) Barcelona; (17) Pyongyang; (18) Bangkok; (19) Vienna (20) Omaha; Henry Doorly Zoo in Omaha, Nebraska, USA.

Correct answers were received from:

Alan & Sue Murtagh; Jon & Pam Heyes; The Booths; Frank FitzGibbon & Co. (Special mention to those with almost all correct: Jan, Grandson Edward & Diane; Sue & Rod Nethercote; Sarah Craddock

This month's winner is:

Jon & Pam Heyes

The July Quiz

**This months quiz gives synonyms of very famous books,
can you identify them all?**

Example: *Conflict of the Planets* gives *War of the Worlds*.

No. Clue

1. A story of a pair of metropolitan areas
2. Female in Ebony
3. An Examiner Shouts
4. Ego and Discrimination
5. The Highway to a Lancashire Town Jetty
6. Problem Occasions
7. High Hopes
8. Considerable Commotion Around Void
9. To Murder an Insulting Fowl
10. Desolate residence
11. The Aged Inquisitive Emporium
12. Sixteen from two tonnes
13. Creature Ranch
14. A Winterfest Song
15. Red Liquid Male Siblings
16. Of Vermin and Males
17. Trader of Italian City
18. Leader of the glides
19. An acquaintance of you and I
20. Spin round Mr Cromwell

Name:

Contact:

Please send your answers to Carolyn Russell at
Martin House, Church Road, Bitton (the yellow
house) or email mrscrussell@icloud.com by 15
July



Based in Keynsham

Fully trained and registered member of the
Guild of Master Chimney Sweeps

Contact Hugh on 0117 9868936
or 07824 508758
www.bristlesweep.co.uk



Robert Pearce has over 40 years' experience
plumbing in the local area



Available for
general plumbing
and repairs

Tel: 07814 607974

Email: robsuep@btinternet.com

Hanney Welding Limited

For all your Welding & Fabrication
requirements

Eastover Works, Golden Valley Lane, Bitton

Tel: 0117 932 2647

Email: martin@hanneywelding.co.uk

The last word

Past and Future



It was about 2 years ago that Mike Gates of the Bitton History Group first proposed that the 200th anniversary of the installation of the Ellacombe chiming device would be an event worth celebrating. It was particularly welcome as it would enable the church Futures Committee to pursue one of its aims to preserve and keep alive St Mary's rich heritage. We should all be very grateful to Mike, not only for his suggestion, but in building an enthusiasm for it in this country and across the world, culminating in the event of 26 June.

The Futures Committee had intended to have a more extensive and possibly formal event to launch the church's development appeal, but COVID restrictions put an end to such thoughts. As it happens, good weather, the enormous enthusiasm of bell ringers around the world and the attention of the media, created event that felt both special and right for the circumstances.

The opportunity was taken to launch the church's development appeal and to set out how it is intended to make changes by reordering and replanning St Mary's in ways that have been discussed over the past 8 or 9 years. The changes made by the Ellacombes in the nineteenth century only remind us that churches, like other organisations, adapt and develop over time. Those that do not usually fail to survive.

The bicentennial anniversary was a huge success, but let us hope it can be much as a guide to the future as a celebration of the past.

Jim Heavens



- Design and build
- Building Maintenance
- Renovation
- Refurbishment
- Roofing

K P Wilton & Son Ltd

11/12 Brighton Place, Kingswood, Bristol BS15 1QY

Tel: 0117 967 1207

Email: info@kpwilton.co.uk



ROY PREDDY FUNERAL DIRECTORS

2 Cossham Street, Mangotsfield BS16 9EN (0117) 9562834

We are at your service 24 hours a day

We will help and guide you every step of the way

We will guide you through our choice of funeral plans

We can help and advise you choose a memorial

We are members of the National Association of Funeral Directors

Our other Bristol businesses can similarly help you -

Roy Preddy - Kingswood (0117) 9446051

TB & H Pendock - Hambrook (0117) 9566774

Stenner & Hill - Shirehampton (0117) 9823188

R. Davies & Son - Westbury-on-Trym (0117) 9628954

R. Davies & Son - Horfield (0117) 9424039

R. Davies & Son - Bishopsworth (0117) 9641133

Whitchurch FS - Whitchurch (01275) 833441

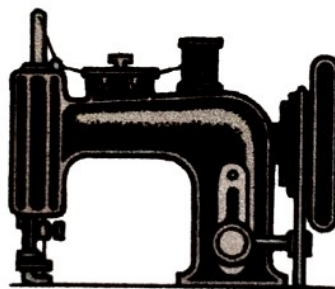
Part of Dignity Ltd, a British Company

Parker's Sewing Services

**Clothing alteration
and repairs**

Soft furnishings

**Specialist projects
and commissions
undertaken**



Telephone Lizzie : 01179326662

Mobile : 07837126945

Email :

lizzieparkerclarke@rocketmail.com

Steve Painter Decorating Services

A family business for three generations offering professional exterior and interior painting and decorating services locally

- ❖ Traditionally trained
- ❖ Quality workmanship
- ❖ Paperhanging specialists
- ❖ Friendly and reliable
- ❖ Competitively priced
- ❖ No VAT added

Contact Steve on 07853 250035

or 0117 956 5190

M.C AUTO REPAIRS

★MOTs ★SERVICING

★CLASSES 4 + 5 + 7

★REPAIRS ★WELDING

★BODYWORK

Telephone: 0117 947 7405

Unit 4d Kingsfield Lane

Longwell Green, Bristol BS30 6DL

NORTON

TAX SHOPS LTD

ACCOUNTANTS & TAX SPECIALISTS

Are you.... Self Employed?
A Company Director?
A Landlord?
An Investor?

Then we can help!

We offer: Accurate high quality work
Competitive fees
Up to date advice
Friendly qualified staff
Local offices in Keynsham & Kingswood
Help to reduce paperwork
Help with 'Making Tax Digital'

Please call us on **0117 9860960** to arrange a free appointment.



Website: www.nortontaxshops.co.uk

Bitton Motor Company

Bath Road Bitton
Bristol BS30 6HY



MOT
Testing Centre



Cars Bought and Sold

Servicing Repairs Engine Tuning
Welding Tyres Exhausts Cam belts

Telephone: (0117) 932 8686